

INGRANAGGI A DENTI DRITTI

STRAIGHT GEARS

INDICE SERIE

SERIES INDEX

SERIE SERIES	QUALITÀ QUALITY	MATERIALE MATERIAL	TRATTAMENTO TERMICO HEAT-TREATMENT	HRC	SUPERFICIE SURFACE	MOZZO HUB	MODULI DISPONIBILI MODULES	PAG PAGE
400	5e24	20MnCr5	cementazione case-hardening	60	rettificata ground	corto short	1,5_2_2,5_3_3,183_4_5_6_8_10	100
405	5e24	C45	denti temprati ad induzione induction-hardened teeth	55-58	rettificata ground	corto short	1,5_2_2,5_3_3,183_4_5_6_8_10	101
410	5e24	20MnCr5	cementazione case-hardening	60	rettificata ground	lungo long	1,5_2_2,5_3_3,183_4_5_6_8_10	102
415	5e24	C45	denti temprati ad induzione induction-hardened teeth	55-58	rettificata ground	lungo long	1,5_2_2,5_3_3,183_4_5_6_8_10	103
420	6e24	20MnCr5	cementazione case-hardening	60	rettificata ground	corto short	1,5_2_2,5_3_3,183_4_5_6_8_10	104
425	6e24	C45	denti temprati ad induzione induction-hardened teeth	55-58	rettificata ground	corto short	1,5_2_2,5_3_3,183_4_5_6_8_10	105
430	6e24	20MnCr5	cementazione case-hardening	60	rettificata ground	lungo long	1,5_2_2,5_3_3,183_4_5_6_8_10	106
435	6e24	C45	denti temprati ad induzione induction-hardened teeth	55-58	rettificata ground	lungo long	1,5_2_2,5_3_3,183_4_5_6_8_10	107
440	7e25	20MnCr5	cementazione case-hardening	60	rettificata ground	corto short	1,5_2_2,5_3_3,183_4_5_6_8_10	108
445	7e25	C45	denti temprati ad induzione induction-hardened teeth	55-58	rettificata ground	corto short	1,5_2_2,5_3_3,183_4_5_6_8_10	109
450	7e25	20MnCr5	cementazione case-hardening	60	rettificata ground	lungo long	1,5_2_2,5_3_3,183_4_5_6_8_10	110
455	7e25	C45	denti temprati ad induzione induction-hardened teeth	55-58	rettificata ground	lungo long	1,5_2_2,5_3_3,183_4_5_6_8_10	111
460	9e25	C45	non incluso not included	-	finitura di utensile milled teeth	corto short	1,5_2_2,5_3_3,183_4_5_6_8_10	112
465	9e25	C45	non incluso not included	-	finitura di utensile milled teeth	lungo long	1,5_2_2,5_3_3,183_4_5_6_8_10	113
470	10e25	C45	denti temprati ad induzione induction-hardened teeth	55-58	finitura di utensile, foro interno rettificato milled teeth, ground internal hole	corto short	1,5_2_2,5_3_3,183_4_5_6_8_10	114
475	10e25	C45	denti temprati ad induzione induction-hardened teeth	55-58	finitura di utensile, foro interno rettificato milled teeth, ground internal hole	lungo long	1,5_2_2,5_3_3,183_4_5_6_8_10	115



Dentatura Dritta SERIE 400

Straight tooth system SERIES 400

Q5 - 20MnCr5

Mozzo Corto Short Hub

Qualità - Quality: **5e24**

Materiale - Material: **20MnCr5**

Angolo di pressione - Pressure angle: **20°**

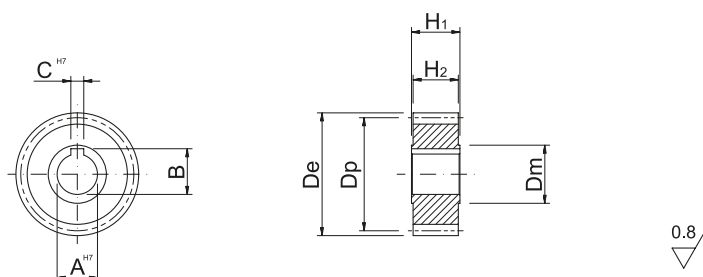
Superficie: rettificata - Surface: ground

Trattamento termico: cementazione 60 HRC

Heat-treatment: case-hardening 60 HRC

R= 1200 N/mm² (resistenza carico a rottura)

R= 1200 N/mm² (tensile strength)



In caso di prodotti personalizzati a disegno, invia la tua richiesta a - In case you need customized products, please send your request to: info@gambinimeccanica.it

CODICE ITEM CODE	M	Z	De	Dp	CH7	B	AH7	H2	H1	Dmh8
1SG35S015016S	1,5	16	27	24	4	11,5	10	28	30	20
1SG35S015018S	1,5	18	30	27	5	17,3	15	28	30	22
1SG35S015020S	1,5	20	33	30	5	17,3	15	28	30	25
1SG35S015024S	1,5	24	39	36	6	22,8	20	28	30	32
1SG35S015030S	1,5	30	48	45	8	28,3	25	28	30	40
1SG35S015040S	1,5	40	63	60	12	43,3	40	28	30	55
1SG35S020016S	2	16	36	32	5	17,3	15	28	30	25
1SG35S020018S	2	18	40	36	5	17,3	15	28	30	30
1SG35S020020S	2	20	44	40	6	22,8	20	28	30	30
1SG35S020022S	2	22	48	44	8	28,3	25	28	30	36
1SG35S020024S	2	24	52	48	8	28,3	25	28	30	36
1SG35S020030S	2	30	64	60	8	28,3	25	28	30	36
1SG35S020040S	2	40	84	80	12	43,3	40	28	30	62
1SG35S030020S	3	20	66	60	6	22,8	20	28	30	30
1SG35S030022S	3	22	72	66	8	28,3	25	28	30	36
1SG35S030024S	3	24	78	72	8	28,3	25	28	30	36
1SG35S030040S	3	40	126	120	12	43,3	40	28	30	62
1SG35S031020S	3,183	20	70,028	63,662	6	22,8	20	28	30	30
1SG35S031022S	3,183	22	76,394	70,028	8	28,3	25	28	30	36
1SG35S031024S	3,183	24	82,76	76,394	8	28,3	25	28	30	36
1SG35S031030S	3,183	30	101,859	95,493	8	28,3	25	28	30	36
1SG35S040020S	4	20	88	80	10	38,3	35	40	50	55
1SG35S040025S	4	25	108	100	10	38,3	35	40	50	55
1SG35S040030S	4	30	128	120	10	38,3	35	40	50	55
1SG35S040032S	4	32	136	128	10	38,3	35	40	50	55
1SG35S050020S	5	20	110	100	14	48,8	45	50	60	68
1SG35S050024S	5	24	130	120	14	48,8	45	50	60	68
1SG35S050025S	5	25	135	125	14	48,8	45	50	60	68
1SG35S050030S	5	30	160	150	14	48,8	45	50	60	68
1SG35S060020S	6	20	132	120	16	59,3	55	60	70	80
1SG35S060021S	6	21	138	126	16	59,3	55	60	70	80
1SG35S060024S	6	24	156	144	16	59,3	55	60	70	80
1SG35S060025S	6	25	162	150	16	59,3	55	60	70	80
1SG35S060030S	6	30	192	180	16	59,3	55	60	70	80
1SG35S080020S	8	20	176	160	20	79,9	75	80	100	110
1SG35S100020S	10	20	220	200	22	90,4	85	100	120	125

Dentatura Dritta SERIE 405

Straight tooth system SERIES 405

Q5 - C45

Mozzo Corto Short Hub

Qualità - Quality: 5e24

Materiale - Material: C45

Angolo di pressione - Pressure angle: 20°

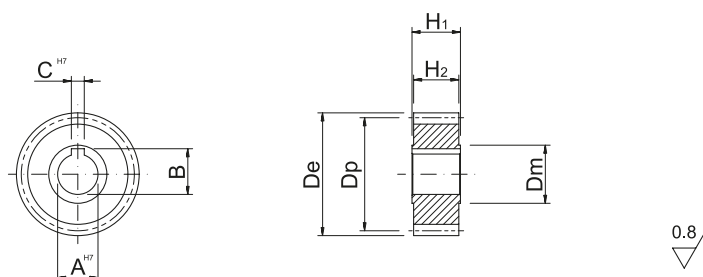
Superficie: rettificata - Surface: ground

Trattamento termico: denti temprati ad induzione 55-58 HRC

Heat-treatment: induction-hardened teeth 55-58 HRC

R= 700 N/mm² (resistenza carico a rottura)

R= 700 N/mm² (tensile strength)



In caso di prodotti personalizzati a disegno, invia la tua richiesta a - In case you need customized products, please send your request to: info@gambinimeccanica.it

CODICE ITEM CODE	M	Z	De	Dp	CH7	B	AH7	H2	H1	Dmh8
1SG15S015016S	1,5	16	27	24	4	11,5	10	28	30	20
1SG15S015018S	1,5	18	30	27	5	17,3	15	28	30	22
1SG15S015020S	1,5	20	33	30	5	17,3	15	28	30	25
1SG15S015024S	1,5	24	39	36	6	22,8	20	28	30	32
1SG15S015030S	1,5	30	48	45	8	28,3	25	28	30	40
1SG15S015040S	1,5	40	63	60	12	43,3	40	28	30	55
1SG15S020016S	2	16	36	32	5	17,3	15	28	30	25
1SG15S020018S	2	18	40	36	5	17,3	15	28	30	30
1SG15S020020S	2	20	44	40	6	22,8	20	28	30	30
1SG15S020022S	2	22	48	44	8	28,3	25	28	30	36
1SG15S020024S	2	24	52	48	8	28,3	25	28	30	36
1SG15S020030S	2	30	64	60	8	28,3	25	28	30	36
1SG15S020040S	2	40	84	80	12	43,3	40	28	30	62
1SG15S030020S	3	20	66	60	6	22,8	20	28	30	30
1SG15S030022S	3	22	72	66	8	28,3	25	28	30	36
1SG15S030024S	3	24	78	72	8	28,3	25	28	30	36
1SG15S030040S	3	40	126	120	12	43,3	40	28	30	62
1SG15S031020S	3,183	20	70,028	63,662	6	22,8	20	28	30	30
1SG15S031022S	3,183	22	76,394	70,028	8	28,3	25	28	30	36
1SG15S031024S	3,183	24	82,76	76,394	8	28,3	25	28	30	36
1SG15S031030S	3,183	30	101,859	95,493	8	28,3	25	28	30	36
1SG15S040020S	4	20	88	80	10	38,3	35	40	50	55
1SG15S040025S	4	25	108	100	10	38,3	35	40	50	55
1SG15S040030S	4	30	128	120	10	38,3	35	40	50	55
1SG15S040032S	4	32	136	128	10	38,3	35	40	50	55
1SG15S050020S	5	20	110	100	14	48,8	45	50	60	68
1SG15S050024S	5	24	130	120	14	48,8	45	50	60	68
1SG15S050025S	5	25	135	125	14	48,8	45	50	60	68
1SG15S050030S	5	30	160	150	14	48,8	45	50	60	68
1SG15S060020S	6	20	132	120	16	59,3	55	60	70	80
1SG15S060021S	6	21	138	126	16	59,3	55	60	70	80
1SG15S060024S	6	24	156	144	16	59,3	55	60	70	80
1SG15S060025S	6	25	162	150	16	59,3	55	60	70	80
1SG15S060030S	6	30	192	180	16	59,3	55	60	70	80
1SG15S080020S	8	20	176	160	20	79,9	75	80	100	110
1SG15S100020S	10	20	220	200	22	90,4	85	100	120	125



Dentatura Dritta SERIE 410

Straight tooth system SERIES 410

Q5 - 20MnCr5

MoZZo Lungo Long Hub

Qualità - Quality: **5e24**

Materiale - Material: **20MnCr5**

Angolo di pressione - Pressure angle: **20°**

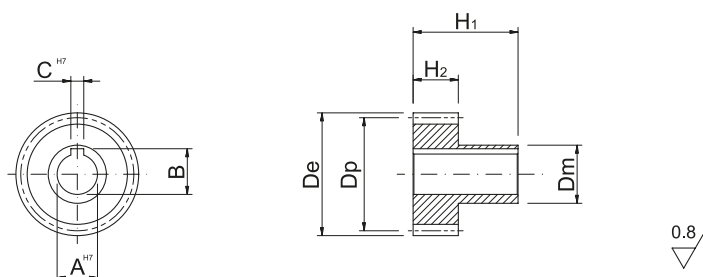
Superficie: rettificata - Surface: ground

Trattamento termico: cementazione 60 HRC

Heat-treatment: case-hardening 60 HRC

R= 1200 N/mm² (resistenza carico a rottura)

R= 1200 N/mm² (tensile strength)



In caso di prodotti personalizzati a disegno, invia la tua richiesta a - In case you need customized products, please send your request to: info@gambinimeccanica.it

CODICE ITEM CODE	M	Z	De	Dp	CH7	B	AH7	H2	H1	Dmh8
1SG35S015016L	1,5	16	27	24	4	11,5	10	28	65	20
1SG35S015018L	1,5	18	30	27	5	17,3	15	28	65	22
1SG35S015020L	1,5	20	33	30	5	17,3	15	28	65	25
1SG35S015024L	1,5	24	39	36	6	22,8	20	28	65	32
1SG35S015030L	1,5	30	48	45	8	28,3	25	28	65	40
1SG35S015040L	1,5	40	63	60	12	43,3	40	28	65	55
1SG35S020016L	2	16	36	32	5	17,3	15	28	65	25
1SG35S020018L	2	18	40	36	5	17,3	15	28	65	30
1SG35S020020L	2	20	44	40	6	22,8	20	28	65	30
1SG35S020022L	2	22	48	44	8	28,3	25	28	65	36
1SG35S020024L	2	24	52	48	8	28,3	25	28	65	36
1SG35S020030L	2	30	64	60	8	28,3	25	28	65	36
1SG35S020040L	2	40	84	80	12	43,3	40	28	65	62
1SG35S030020L	3	20	66	60	6	22,8	20	28	65	30
1SG35S030022L	3	22	72	66	8	28,3	25	28	65	36
1SG35S030024L	3	24	78	72	8	28,3	25	28	65	36
1SG35S030040L	3	40	126	120	12	43,3	40	28	65	62
1SG35S031020L	3,183	20	70,028	63,662	6	22,8	20	28	65	30
1SG35S031022L	3,183	22	76,394	70,028	8	28,3	25	28	65	36
1SG35S031024L	3,183	24	82,76	76,394	8	28,3	25	28	65	36
1SG35S031030L	3,183	30	101,859	95,493	8	28,3	25	28	65	36
1SG35S040020L	4	20	88	80	10	38,3	35	40	75	55
1SG35S040025L	4	25	108	100	10	38,3	35	40	75	55
1SG35S040030L	4	30	128	120	10	38,3	35	40	75	55
1SG35S040032L	4	32	136	128	10	38,3	35	40	75	55
1SG35S050020L	5	20	110	100	14	48,8	45	50	75	68
1SG35S050024L	5	24	130	120	14	48,8	45	50	75	68
1SG35S050025L	5	25	135	125	14	48,8	45	50	75	68
1SG35S050030L	5	30	160	150	14	48,8	45	50	75	68
1SG35S060020L	6	20	132	120	16	59,3	55	60	120	80
1SG35S060021L	6	21	138	126	16	59,3	55	60	120	80
1SG35S060024L	6	24	156	144	16	59,3	55	60	120	80
1SG35S060025L	6	25	162	150	16	59,3	55	60	120	80
1SG35S060030L	6	30	192	180	16	59,3	55	60	120	80
1SG35S080020L	8	20	176	160	20	79,9	75	80	145	110
1SG35S100020L	10	20	220	200	22	90,4	85	100	165	125

Dentatura Dritta SERIE 415

Straight tooth system SERIES 415

Q5 - C45

MoZZo Lungo Long Hub

Qualità - Quality: **5e24**

Materiale - Material: **C45**

Angolo di pressione - Pressure angle: **20°**

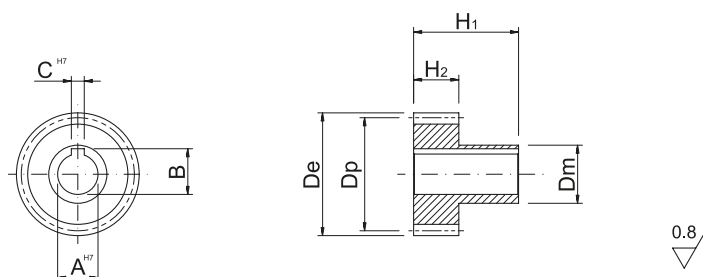
Superficie: rettificata - Surface: ground

Trattamento termico: denti temprati ad induzione 55-58 HRC

Heat-treatment: induction-hardened teeth 55-58 HRC

R= 700 N/mm² (resistenza carico a rottura)

R= 700 N/mm² (tensile strength)



In caso di prodotti personalizzati a disegno, invia la tua richiesta a - In case you need customized products, please send your request to: info@gambinimeccanica.it

CODICE ITEM CODE	M	Z	De	Dp	CH7	B	AH7	H2	H1	Dmh8
1SG15S015016L	1,5	16	27	24	4	11,5	10	28	65	20
1SG15S015018L	1,5	18	30	27	5	17,3	15	28	65	22
1SG15S015020L	1,5	20	33	30	5	17,3	15	28	65	25
1SG15S015024L	1,5	24	39	36	6	22,8	20	28	65	32
1SG15S015030L	1,5	30	48	45	8	28,3	25	28	65	40
1SG15S015040L	1,5	40	63	60	12	43,3	40	28	65	55
1SG15S020016L	2	16	36	32	5	17,3	15	28	65	25
1SG15S020018L	2	18	40	36	5	17,3	15	28	65	30
1SG15S020020L	2	20	44	40	6	22,8	20	28	65	30
1SG15S020022L	2	22	48	44	8	28,3	25	28	65	36
1SG15S020024L	2	24	52	48	8	28,3	25	28	65	36
1SG15S020030L	2	30	64	60	8	28,3	25	28	65	36
1SG15S020040L	2	40	84	80	12	43,3	40	28	65	62
1SG15S030020L	3	20	66	60	6	22,8	20	28	65	30
1SG15S030022L	3	22	72	66	8	28,3	25	28	65	36
1SG15S030024L	3	24	78	72	8	28,3	25	28	65	36
1SG15S030040L	3	40	126	120	12	43,3	40	28	65	62
1SG15S031020L	3,183	20	70,028	63,662	6	22,8	20	28	65	30
1SG15S031022L	3,183	22	76,394	70,028	8	28,3	25	28	65	36
1SG15S031024L	3,183	24	82,76	76,394	8	28,3	25	28	65	36
1SG15S031030L	3,183	30	101,859	95,493	8	28,3	25	28	65	36
1SG15S040020L	4	20	88	80	10	38,3	35	40	75	55
1SG15S040025L	4	25	108	100	10	38,3	35	40	75	55
1SG15S040030L	4	30	128	120	10	38,3	35	40	75	55
1SG15S040032L	4	32	136	128	10	38,3	35	40	75	55
1SG15S050020L	5	20	110	100	14	48,8	45	50	75	68
1SG15S050024L	5	24	130	120	14	48,8	45	50	75	68
1SG15S050025L	5	25	135	125	14	48,8	45	50	75	68
1SG15S050030L	5	30	160	150	14	48,8	45	50	75	68
1SG15S060020L	6	20	132	120	16	59,3	55	60	120	80
1SG15S060021L	6	21	138	126	16	59,3	55	60	120	80
1SG15S060024L	6	24	156	144	16	59,3	55	60	120	80
1SG15S060025L	6	25	162	150	16	59,3	55	60	120	80
1SG15S060030L	6	30	192	180	16	59,3	55	60	120	80
1SG15S080020L	8	20	176	160	20	79,9	75	80	145	110
1SG15S100020L	10	20	220	200	22	90,4	85	100	165	125



Dentatura Dritta SERIE 420

Straight tooth system SERIES 420

Q6 - 20MnCr5

Mozzo Corto Short Hub

Qualità - Quality: **6e24**

Materiale - Material: **20MnCr5**

Angolo di pressione - Pressure angle: **20°**

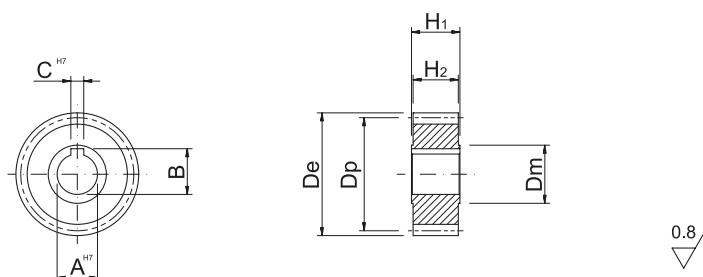
Superficie: rettificata - Surface: ground

Trattamento termico: cementazione 60 HRC

Heat-treatment: case-hardening 60 HRC

R= 1200 N/mm² (resistenza carico a rottura)

R= 1200 N/mm² (tensile strength)



In caso di prodotti personalizzati a disegno, invia la tua richiesta a - In case you need customized products, please send your request to: info@gambinimeccanica.it

CODICE ITEM CODE	M	Z	De	Dp	CH7	B	AH7	H2	H1	Dmh8
1SG36S015016S	1,5	16	27	24	4	11,5	10	28	30	20
1SG36S015018S	1,5	18	30	27	5	17,3	15	28	30	22
1SG36S015020S	1,5	20	33	30	5	17,3	15	28	30	25
1SG36S015024S	1,5	24	39	36	6	22,8	20	28	30	32
1SG36S015030S	1,5	30	48	45	8	28,3	25	28	30	40
1SG36S015040S	1,5	40	63	60	12	43,3	40	28	30	55
1SG36S020016S	2	16	36	32	5	17,3	15	28	30	25
1SG36S020018S	2	18	40	36	5	17,3	15	28	30	30
1SG36S020020S	2	20	44	40	6	22,8	20	28	30	30
1SG36S020022S	2	22	48	44	8	28,3	25	28	30	36
1SG36S020024S	2	24	52	48	8	28,3	25	28	30	36
1SG36S020030S	2	30	64	60	8	28,3	25	28	30	36
1SG36S020040S	2	40	84	80	12	43,3	40	28	30	62
1SG36S030020S	3	20	66	60	6	22,8	20	28	30	30
1SG36S030022S	3	22	72	66	8	28,3	25	28	30	36
1SG36S030024S	3	24	78	72	8	28,3	25	28	30	36
1SG36S030040S	3	40	126	120	12	43,3	40	28	30	62
1SG36S031020S	3,183	20	70,028	63,662	6	22,8	20	28	30	30
1SG36S031022S	3,183	22	76,394	70,028	8	28,3	25	28	30	36
1SG36S031024S	3,183	24	82,76	76,394	8	28,3	25	28	30	36
1SG36S031030S	3,183	30	101,859	95,493	8	28,3	25	28	30	36
1SG36S040020S	4	20	88	80	10	38,3	35	40	50	55
1SG36S040025S	4	25	108	100	10	38,3	35	40	50	55
1SG36S040030S	4	30	128	120	10	38,3	35	40	50	55
1SG36S040032S	4	32	136	128	10	38,3	35	40	50	55
1SG36S050020S	5	20	110	100	14	48,8	45	50	60	68
1SG36S050024S	5	24	130	120	14	48,8	45	50	60	68
1SG36S050025S	5	25	135	125	14	48,8	45	50	60	68
1SG36S050030S	5	30	160	150	14	48,8	45	50	60	68
1SG36S060020S	6	20	132	120	16	59,3	55	60	70	80
1SG36S060021S	6	21	138	126	16	59,3	55	60	70	80
1SG36S060024S	6	24	156	144	16	59,3	55	60	70	80
1SG36S060025S	6	25	162	150	16	59,3	55	60	70	80
1SG36S060030S	6	30	192	180	16	59,3	55	60	70	80
1SG36S080020S	8	20	176	160	20	79,9	75	80	100	110
1SG36S100020S	10	20	220	200	22	90,4	85	100	120	125

Dentatura Dritta SERIE 425

Straight tooth system SERIES 425

Q6 - C45

Mozzo Corto Short Hub

Qualità - Quality: **6e24**

Materiale - Material: **C45**

Angolo di pressione - Pressure angle: **20°**

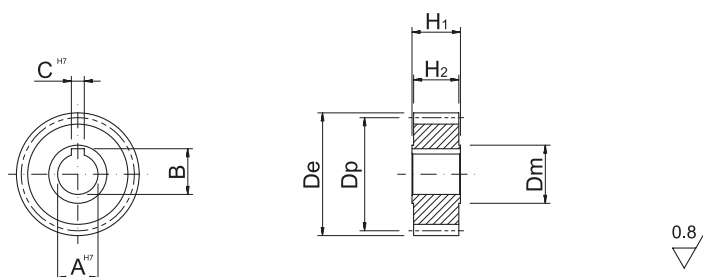
Superficie: rettificata - Surface: ground

Trattamento termico: denti temprati ad induzione 55-58 HRC

Heat-treatment: induction-hardened teeth 55-58 HRC

R= 700 N/mm² (resistenza carico a rottura)

R= 700 N/mm² (tensile strength)



In caso di prodotti personalizzati a disegno, invia la tua richiesta a - In case you need customized products, please send your request to: info@gambinimeccanica.it

CODICE ITEM CODE	M	Z	De	Dp	CH7	B	AH7	H2	H1	Dmh8
1SG16S015016S	1,5	16	27	24	4	11,5	10	28	30	20
1SG16S015018S	1,5	18	30	27	5	17,3	15	28	30	22
1SG16S015020S	1,5	20	33	30	5	17,3	15	28	30	25
1SG16S015024S	1,5	24	39	36	6	22,8	20	28	30	32
1SG16S015030S	1,5	30	48	45	8	28,3	25	28	30	40
1SG16S015040S	1,5	40	63	60	12	43,3	40	28	30	55
1SG16S020016S	2	16	36	32	5	17,3	15	28	30	25
1SG16S020018S	2	18	40	36	5	17,3	15	28	30	30
1SG16S020020S	2	20	44	40	6	22,8	20	28	30	30
1SG16S020022S	2	22	48	44	8	28,3	25	28	30	36
1SG16S020024S	2	24	52	48	8	28,3	25	28	30	36
1SG16S020030S	2	30	64	60	8	28,3	25	28	30	36
1SG16S020040S	2	40	84	80	12	43,3	40	28	30	62
1SG16S030020S	3	20	66	60	6	22,8	20	28	30	30
1SG16S030022S	3	22	72	66	8	28,3	25	28	30	36
1SG16S030024S	3	24	78	72	8	28,3	25	28	30	36
1SG16S030040S	3	40	126	120	12	43,3	40	28	30	62
1SG16S031020S	3,183	20	70,028	63,662	6	22,8	20	28	30	30
1SG16S031022S	3,183	22	76,394	70,028	8	28,3	25	28	30	36
1SG16S031024S	3,183	24	82,76	76,394	8	28,3	25	28	30	36
1SG16S031030S	3,183	30	101,859	95,493	8	28,3	25	28	30	36
1SG16S040020S	4	20	88	80	10	38,3	35	40	50	55
1SG16S040025S	4	25	108	100	10	38,3	35	40	50	55
1SG16S040030S	4	30	128	120	10	38,3	35	40	50	55
1SG16S040032S	4	32	136	128	10	38,3	35	40	50	55
1SG16S050020S	5	20	110	100	14	48,8	45	50	60	68
1SG16S050024S	5	24	130	120	14	48,8	45	50	60	68
1SG16S050025S	5	25	135	125	14	48,8	45	50	60	68
1SG16S050030S	5	30	160	150	14	48,8	45	50	60	68
1SG16S060020S	6	20	132	120	16	59,3	55	60	70	80
1SG16S060021S	6	21	138	126	16	59,3	55	60	70	80
1SG16S060024S	6	24	156	144	16	59,3	55	60	70	80
1SG16S060025S	6	25	162	150	16	59,3	55	60	70	80
1SG16S060030S	6	30	192	180	16	59,3	55	60	70	80
1SG16S080020S	8	20	176	160	20	79,9	75	80	100	110
1SG16S100020S	10	20	220	200	22	90,4	85	100	120	125



Dentatura Dritta SERIE 430

Straight tooth system SERIES 430

Q6 - 20MnCr5

Mozzo Lungo Long Hub

Qualità - Quality: **6e24**

Materiale - Material: **20MnCr5**

Angolo di pressione - Pressure angle: **20°**

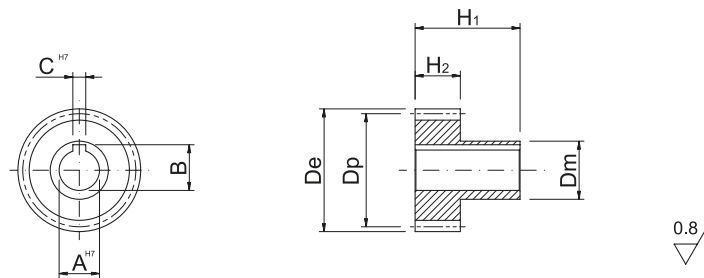
Superficie: rettificata - Surface: ground

Trattamento termico: cementazione 60 HRC

Heat-treatment: case-hardening 60 HRC

R= 1200 N/mm² (resistenza carico a rottura)

R= 1200 N/mm² (tensile strength)



In caso di prodotti personalizzati a disegno, invia la tua richiesta a - In case you need customized products, please send your request to: info@gambinimeccanica.it

CODICE ITEM CODE	M	Z	De	Dp	CH7	B	AH7	H2	H1	Dmh8
1SG36S015016L	1,5	16	27	24	4	11,5	10	28	65	20
1SG36S015018L	1,5	18	30	27	5	17,3	15	28	65	22
1SG36S015020L	1,5	20	33	30	5	17,3	15	28	65	25
1SG36S015024L	1,5	24	39	36	6	22,8	20	28	65	32
1SG36S015030L	1,5	30	48	45	8	28,3	25	28	65	40
1SG36S015040L	1,5	40	63	60	12	43,3	40	28	65	55
1SG36S020016L	2	16	36	32	5	17,3	15	28	65	25
1SG36S020018L	2	18	40	36	5	17,3	15	28	65	30
1SG36S020020L	2	20	44	40	6	22,8	20	28	65	30
1SG36S020022L	2	22	48	44	8	28,3	25	28	65	36
1SG36S020024L	2	24	52	48	8	28,3	25	28	65	36
1SG36S020030L	2	30	64	60	8	28,3	25	28	65	36
1SG36S020040L	2	40	84	80	12	43,3	40	28	65	62
1SG36S030020L	3	20	66	60	6	22,8	20	28	65	30
1SG36S030022L	3	22	72	66	8	28,3	25	28	65	36
1SG36S030024L	3	24	78	72	8	28,3	25	28	65	36
1SG36S030040L	3	40	126	120	12	43,3	40	28	65	62
1SG36S031020L	3,183	20	70,028	63,662	6	22,8	20	28	65	30
1SG36S031022L	3,183	22	76,394	70,028	8	28,3	25	28	65	36
1SG36S031024L	3,183	24	82,76	76,394	8	28,3	25	28	65	36
1SG36S031030L	3,183	30	101,859	95,493	8	28,3	25	28	65	36
1SG36S040020L	4	20	88	80	10	38,3	35	40	75	55
1SG36S040025L	4	25	108	100	10	38,3	35	40	75	55
1SG36S040030L	4	30	128	120	10	38,3	35	40	75	55
1SG36S040032L	4	32	136	128	10	38,3	35	40	75	55
1SG36S050020L	5	20	110	100	14	48,8	45	50	75	68
1SG36S050024L	5	24	130	120	14	48,8	45	50	75	68
1SG36S050025L	5	25	135	125	14	48,8	45	50	75	68
1SG36S050030L	5	30	160	150	14	48,8	45	50	75	68
1SG36S060020L	6	20	132	120	16	59,3	55	60	120	80
1SG36S060021L	6	21	138	126	16	59,3	55	60	120	80
1SG36S060024L	6	24	156	144	16	59,3	55	60	120	80
1SG36S060025L	6	25	162	150	16	59,3	55	60	120	80
1SG36S060030L	6	30	192	180	16	59,3	55	60	120	80
1SG36S080020L	8	20	176	160	20	79,9	75	80	145	110
1SG36S100020L	10	20	220	200	22	90,4	85	100	165	125

Dentatura Dritta SERIE 435

Straight tooth system SERIES 435

Q6 - C45

Mozzo Lungo Long Hub

Qualità - Quality: **6e24**

Materiale - Material: **C45**

Angolo di pressione - Pressure angle: **20°**

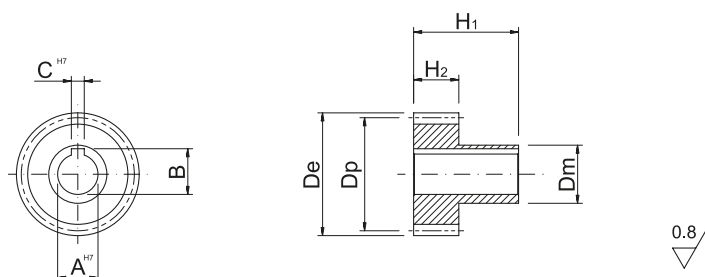
Superficie: rettificata - Surface: ground

Trattamento termico: denti temprati ad induzione 55-58 HRC

Heat-treatment: induction-hardened teeth 55-58 HRC

R= 700 N/mm² (resistenza carico a rottura)

R= 700 N/mm² (tensile strength)



In caso di prodotti personalizzati a disegno, invia la tua richiesta a - In case you need customized products, please send your request to: info@gambinimeccanica.it

CODICE ITEM CODE	M	Z	De	Dp	CH7	B	AH7	H2	H1	Dmh8
1SG16S015016L	1,5	16	27	24	4	11,5	10	28	65	20
1SG16S015018L	1,5	18	30	27	5	17,3	15	28	65	22
1SG16S015020L	1,5	20	33	30	5	17,3	15	28	65	25
1SG16S015024L	1,5	24	39	36	6	22,8	20	28	65	32
1SG16S015030L	1,5	30	48	45	8	28,3	25	28	65	40
1SG16S015040L	1,5	40	63	60	12	43,3	40	28	65	55
1SG16S020016L	2	16	36	32	5	17,3	15	28	65	25
1SG16S020018L	2	18	40	36	5	17,3	15	28	65	30
1SG16S020020L	2	20	44	40	6	22,8	20	28	65	30
1SG16S020022L	2	22	48	44	8	28,3	25	28	65	36
1SG16S020024L	2	24	52	48	8	28,3	25	28	65	36
1SG16S020030L	2	30	64	60	8	28,3	25	28	65	36
1SG16S020040L	2	40	84	80	12	43,3	40	28	65	62
1SG16S030020L	3	20	66	60	6	22,8	20	28	65	30
1SG16S030022L	3	22	72	66	8	28,3	25	28	65	36
1SG16S030024L	3	24	78	72	8	28,3	25	28	65	36
1SG16S030040L	3	40	126	120	12	43,3	40	28	65	62
1SG16S031020L	3,183	20	70,028	63,662	6	22,8	20	28	65	30
1SG16S031022L	3,183	22	76,394	70,028	8	28,3	25	28	65	36
1SG16S031024L	3,183	24	82,76	76,394	8	28,3	25	28	65	36
1SG16S031030L	3,183	30	101,859	95,493	8	28,3	25	28	65	36
1SG16S040020L	4	20	88	80	10	38,3	35	40	75	55
1SG16S040025L	4	25	108	100	10	38,3	35	40	75	55
1SG16S040030L	4	30	128	120	10	38,3	35	40	75	55
1SG16S040032L	4	32	136	128	10	38,3	35	40	75	55
1SG16S050020L	5	20	110	100	14	48,8	45	50	75	68
1SG16S050024L	5	24	130	120	14	48,8	45	50	75	68
1SG16S050025L	5	25	135	125	14	48,8	45	50	75	68
1SG16S050030L	5	30	160	150	14	48,8	45	50	75	68
1SG16S060020L	6	20	132	120	16	59,3	55	60	120	80
1SG16S060021L	6	21	138	126	16	59,3	55	60	120	80
1SG16S060024L	6	24	156	144	16	59,3	55	60	120	80
1SG16S060025L	6	25	162	150	16	59,3	55	60	120	80
1SG16S060030L	6	30	192	180	16	59,3	55	60	120	80
1SG16S080020L	8	20	176	160	20	79,9	75	80	145	110
1SG16S100020L	10	20	220	200	22	90,4	85	100	165	125



Dentatura Dritta SERIE 440

Straight tooth system SERIES 440

Q7 - 20MnCr5

Mozzo Corto Short Hub

Qualità - Quality: **7e25**

Materiale - Material: **20MnCr5**

Angolo di pressione - Pressure angle: **20°**

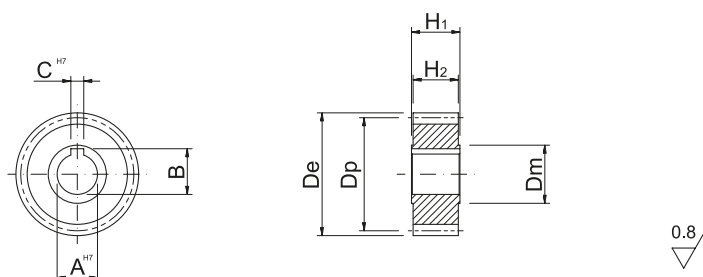
Superficie: rettificata - Surface: ground

Trattamento termico: cementazione 60 HRC

Heat-treatment: case-hardening 60 HRC

R= 1200 N/mm² (resistenza carico a rottura)

R= 1200 N/mm² (tensile strength)



In caso di prodotti personalizzati a disegno, invia la tua richiesta a - In case you need customized products, please send your request to: info@gambinimeccanica.it

CODICE ITEM CODE	M	Z	De	Dp	CH7	B	AH7	H2	H1	Dmh8
1SG37S015016S	1,5	16	27	24	4	11,5	10	28	30	20
1SG37S015018S	1,5	18	30	27	5	17,3	15	28	30	22
1SG37S015020S	1,5	20	33	30	5	17,3	15	28	30	25
1SG37S015024S	1,5	24	39	36	6	22,8	20	28	30	32
1SG37S015030S	1,5	30	48	45	8	28,3	25	28	30	40
1SG37S015040S	1,5	40	63	60	12	43,3	40	28	30	55
1SG37S020016S	2	16	36	32	5	17,3	15	28	30	25
1SG37S020018S	2	18	40	36	5	17,3	15	28	30	30
1SG37S020020S	2	20	44	40	6	22,8	20	28	30	30
1SG37S020022S	2	22	48	44	8	28,3	25	28	30	36
1SG37S020024S	2	24	52	48	8	28,3	25	28	30	36
1SG37S020030S	2	30	64	60	8	28,3	25	28	30	36
1SG37S020040S	2	40	84	80	12	43,3	40	28	30	62
1SG37S030020S	3	20	66	60	6	22,8	20	28	30	30
1SG37S030022S	3	22	72	66	8	28,3	25	28	30	36
1SG37S030024S	3	24	78	72	8	28,3	25	28	30	36
1SG37S030040S	3	40	126	120	12	43,3	40	28	30	62
1SG37S031020S	3,183	20	70,028	63,662	6	22,8	20	28	30	30
1SG37S031022S	3,183	22	76,394	70,028	8	28,3	25	28	30	36
1SG37S031024S	3,183	24	82,76	76,394	8	28,3	25	28	30	36
1SG37S031030S	3,183	30	101,859	95,493	8	28,3	25	28	30	36
1SG37S040020S	4	20	88	80	10	38,3	35	40	50	55
1SG37S040025S	4	25	108	100	10	38,3	35	40	50	55
1SG37S040030S	4	30	128	120	10	38,3	35	40	50	55
1SG37S040032S	4	32	136	128	10	38,3	35	40	50	55
1SG37S050020S	5	20	110	100	14	48,8	45	50	60	68
1SG37S050024S	5	24	130	120	14	48,8	45	50	60	68
1SG37S050025S	5	25	135	125	14	48,8	45	50	60	68
1SG37S050030S	5	30	160	150	14	48,8	45	50	60	68
1SG37S060020S	6	20	132	120	16	59,3	55	60	70	80
1SG37S060021S	6	21	138	126	16	59,3	55	60	70	80
1SG37S060024S	6	24	156	144	16	59,3	55	60	70	80
1SG37S060025S	6	25	162	150	16	59,3	55	60	70	80
1SG37S060030S	6	30	192	180	16	59,3	55	60	70	80
1SG37S080020S	8	20	176	160	20	79,9	75	80	100	110
1SG37S100020S	10	20	220	200	22	90,4	85	100	120	125

Dentatura Dritta SERIE 445

Straight tooth system SERIES 445

Q7 - C45

Mozzo Corto Short Hub

Qualità - Quality: **7e25**

Materiale - Material: **C45**

Angolo di pressione - Pressure angle: **20°**

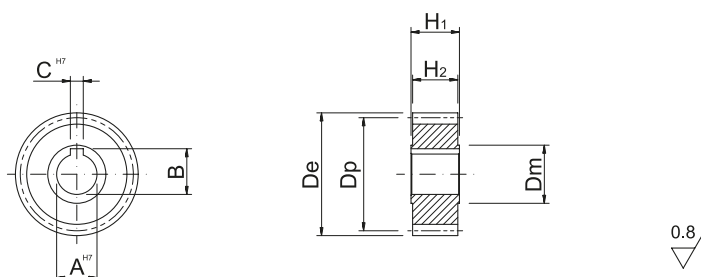
Superficie: rettificata - Surface: ground

Trattamento termico: denti temprati ad induzione 55-58 HRC

Heat-treatment: induction-hardened teeth 55-58 HRC

R= 700 N/mm² (resistenza carico a rottura)

R= 700 N/mm² (tensile strength)



In caso di prodotti personalizzati a disegno, invia la tua richiesta a - In case you need customized products, please send your request to: info@gambinimeccanica.it

CODICE ITEM CODE	M	Z	De	Dp	CH7	B	AH7	H2	H1	Dmh8
1SG17S015016S	1,5	16	27	24	4	11,5	10	28	30	20
1SG17S015018S	1,5	18	30	27	5	17,3	15	28	30	22
1SG17S015020S	1,5	20	33	30	5	17,3	15	28	30	25
1SG17S015024S	1,5	24	39	36	6	22,8	20	28	30	32
1SG17S015030S	1,5	30	48	45	8	28,3	25	28	30	40
1SG17S015040S	1,5	40	63	60	12	43,3	40	28	30	55
1SG17S020016S	2	16	36	32	5	17,3	15	28	30	25
1SG17S020018S	2	18	40	36	5	17,3	15	28	30	30
1SG17S020020S	2	20	44	40	6	22,8	20	28	30	30
1SG17S020022S	2	22	48	44	8	28,3	25	28	30	36
1SG17S020024S	2	24	52	48	8	28,3	25	28	30	36
1SG17S020030S	2	30	64	60	8	28,3	25	28	30	36
1SG17S020040S	2	40	84	80	12	43,3	40	28	30	62
1SG17S030020S	3	20	66	60	6	22,8	20	28	30	30
1SG17S030022S	3	22	72	66	8	28,3	25	28	30	36
1SG17S030024S	3	24	78	72	8	28,3	25	28	30	36
1SG17S030040S	3	40	126	120	12	43,3	40	28	30	62
1SG17S031020S	3,183	20	70,028	63,662	6	22,8	20	28	30	30
1SG17S031022S	3,183	22	76,394	70,028	8	28,3	25	28	30	36
1SG17S031024S	3,183	24	82,76	76,394	8	28,3	25	28	30	36
1SG17S031030S	3,183	30	101,859	95,493	8	28,3	25	28	30	36
1SG17S040020S	4	20	88	80	10	38,3	35	40	50	55
1SG17S040025S	4	25	108	100	10	38,3	35	40	50	55
1SG17S040030S	4	30	128	120	10	38,3	35	40	50	55
1SG17S040032S	4	32	136	128	10	38,3	35	40	50	55
1SG17S050020S	5	20	110	100	14	48,8	45	50	60	68
1SG17S050024S	5	24	130	120	14	48,8	45	50	60	68
1SG17S050025S	5	25	135	125	14	48,8	45	50	60	68
1SG17S050030S	5	30	160	150	14	48,8	45	50	60	68
1SG17S060020S	6	20	132	120	16	59,3	55	60	70	80
1SG17S060021S	6	21	138	126	16	59,3	55	60	70	80
1SG17S060024S	6	24	156	144	16	59,3	55	60	70	80
1SG17S060025S	6	25	162	150	16	59,3	55	60	70	80
1SG17S060030S	6	30	192	180	16	59,3	55	60	70	80
1SG17S080020S	8	20	176	160	20	79,9	75	80	100	110
1SG17S100020S	10	20	220	200	22	90,4	85	100	120	125



Dentatura Dritta SERIE 450

Straight tooth system SERIES 450

Q7 - 20MnCr5

MoZZo Lungo Long Hub

Qualità - Quality: **7e25**

Materiale - Material: **20MnCr5**

Angolo di pressione - Pressure angle: **20°**

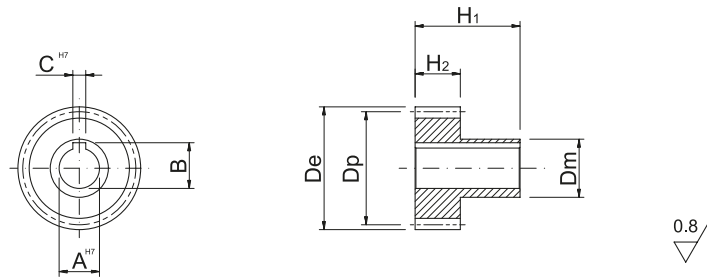
Superficie: rettificata - Surface: ground

Trattamento termico: cementazione 60 HRC

Heat-treatment: case-hardening 60 HRC

R= 1200 N/mm² (resistenza carico a rottura)

R= 1200 N/mm² (tensile strength)



In caso di prodotti personalizzati a disegno, invia la tua richiesta a - In case you need customized products, please send your request to: info@gambinimeccanica.it

CODICE ITEM CODE	M	Z	De	Dp	CH7	B	AH7	H2	H1	Dmh8
1SG37S015016L	1,5	16	27	24	4	11,5	10	28	65	20
1SG37S015018L	1,5	18	30	27	5	17,3	15	28	65	22
1SG37S015020L	1,5	20	33	30	5	17,3	15	28	65	25
1SG37S015024L	1,5	24	39	36	6	22,8	20	28	65	32
1SG37S015030L	1,5	30	48	45	8	28,3	25	28	65	40
1SG37S015040L	1,5	40	63	60	12	43,3	40	28	65	55
1SG37S020016L	2	16	36	32	5	17,3	15	28	65	25
1SG37S020018L	2	18	40	36	5	17,3	15	28	65	30
1SG37S020020L	2	20	44	40	6	22,8	20	28	65	30
1SG37S020022L	2	22	48	44	8	28,3	25	28	65	36
1SG37S020024L	2	24	52	48	8	28,3	25	28	65	36
1SG37S020030L	2	30	64	60	8	28,3	25	28	65	36
1SG37S020040L	2	40	84	80	12	43,3	40	28	65	62
1SG37S030020L	3	20	66	60	6	22,8	20	28	65	30
1SG37S030022L	3	22	72	66	8	28,3	25	28	65	36
1SG37S030024L	3	24	78	72	8	28,3	25	28	65	36
1SG37S030040L	3	40	126	120	12	43,3	40	28	65	62
1SG37S031020L	3,183	20	70,028	63,662	6	22,8	20	28	65	30
1SG37S031022L	3,183	22	76,394	70,028	8	28,3	25	28	65	36
1SG37S031024L	3,183	24	82,76	76,394	8	28,3	25	28	65	36
1SG37S031030L	3,183	30	101,859	95,493	8	28,3	25	28	65	36
1SG37S040020L	4	20	88	80	10	38,3	35	40	75	55
1SG37S040025L	4	25	108	100	10	38,3	35	40	75	55
1SG37S040030L	4	30	128	120	10	38,3	35	40	75	55
1SG37S040032L	4	32	136	128	10	38,3	35	40	75	55
1SG37S050020L	5	20	110	100	14	48,8	45	50	75	68
1SG37S050024L	5	24	130	120	14	48,8	45	50	75	68
1SG37S050025L	5	25	135	125	14	48,8	45	50	75	68
1SG37S050030L	5	30	160	150	14	48,8	45	50	75	68
1SG37S060020L	6	20	132	120	16	59,3	55	60	120	80
1SG37S060021L	6	21	138	126	16	59,3	55	60	120	80
1SG37S060024L	6	24	156	144	16	59,3	55	60	120	80
1SG37S060025L	6	25	162	150	16	59,3	55	60	120	80
1SG37S060030L	6	30	192	180	16	59,3	55	60	120	80
1SG37S080020L	8	20	176	160	20	79,9	75	80	145	110
1SG37S100020L	10	20	220	200	22	90,4	85	100	165	125

Dentatura Dritta SERIE 455

Straight tooth system SERIES 455

Q7- C45

Mozzo Lungo Long Hub

Qualità - Quality: **7e25**

Materiale - Material: **C45**

Angolo di pressione - Pressure angle: **20°**

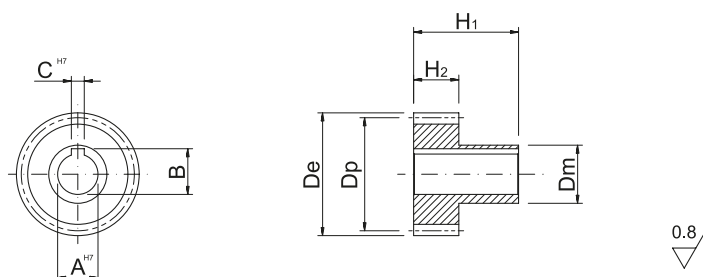
Superficie: rettificata - Surface: ground

Trattamento termico: denti temprati ad induzione 55-58 HRC

Heat-treatment: induction-hardened teeth 55-58 HRC

R= 700 N/mm² (resistenza carico a rottura)

R= 700 N/mm² (tensile strength)



In caso di prodotti personalizzati a disegno, invia la tua richiesta a - In case you need customized products, please send your request to: info@gambinimeccanica.it

CODICE ITEM CODE	M	Z	De	Dp	CH7	B	AH7	H2	H1	Dmh8
1SG17S015016L	1,5	16	27	24	4	11,5	10	28	65	20
1SG17S015018L	1,5	18	30	27	5	17,3	15	28	65	22
1SG17S015020L	1,5	20	33	30	5	17,3	15	28	65	25
1SG17S015024L	1,5	24	39	36	6	22,8	20	28	65	32
1SG17S015030L	1,5	30	48	45	8	28,3	25	28	65	40
1SG17S015040L	1,5	40	63	60	12	43,3	40	28	65	55
1SG17S020016L	2	16	36	32	5	17,3	15	28	65	25
1SG17S020018L	2	18	40	36	5	17,3	15	28	65	30
1SG17S020020L	2	20	44	40	6	22,8	20	28	65	30
1SG17S020022L	2	22	48	44	8	28,3	25	28	65	36
1SG17S020024L	2	24	52	48	8	28,3	25	28	65	36
1SG17S020030L	2	30	64	60	8	28,3	25	28	65	36
1SG17S020040L	2	40	84	80	12	43,3	40	28	65	62
1SG17S030020L	3	20	66	60	6	22,8	20	28	65	30
1SG17S030022L	3	22	72	66	8	28,3	25	28	65	36
1SG17S030024L	3	24	78	72	8	28,3	25	28	65	36
1SG17S030040L	3	40	126	120	12	43,3	40	28	65	62
1SG17S031020L	3,183	20	70,028	63,662	6	22,8	20	28	65	30
1SG17S031022L	3,183	22	76,394	70,028	8	28,3	25	28	65	36
1SG17S031024L	3,183	24	82,76	76,394	8	28,3	25	28	65	36
1SG17S031030L	3,183	30	101,859	95,493	8	28,3	25	28	65	36
1SG17S040020L	4	20	88	80	10	38,3	35	40	75	55
1SG17S040025L	4	25	108	100	10	38,3	35	40	75	55
1SG17S040030L	4	30	128	120	10	38,3	35	40	75	55
1SG17S040032L	4	32	136	128	10	38,3	35	40	75	55
1SG17S050020L	5	20	110	100	14	48,8	45	50	75	68
1SG17S050024L	5	24	130	120	14	48,8	45	50	75	68
1SG17S050025L	5	25	135	125	14	48,8	45	50	75	68
1SG17S050030L	5	30	160	150	14	48,8	45	50	75	68
1SG17S060020L	6	20	132	120	16	59,3	55	60	120	80
1SG17S060021L	6	21	138	126	16	59,3	55	60	120	80
1SG17S060024L	6	24	156	144	16	59,3	55	60	120	80
1SG17S060025L	6	25	162	150	16	59,3	55	60	120	80
1SG17S060030L	6	30	192	180	16	59,3	55	60	120	80
1SG17S080020L	8	20	176	160	20	79,9	75	80	145	110
1SG17S100020L	10	20	220	200	22	90,4	85	100	165	125



Dentatura Dritta SERIE 460

Straight tooth system SERIES 460

Q9 - C45

Mozzo Corto Short Hub

Qualità - Quality: **9e25**

Materiale - Material: **C45**

Angolo di pressione - Pressure angle: **20°**

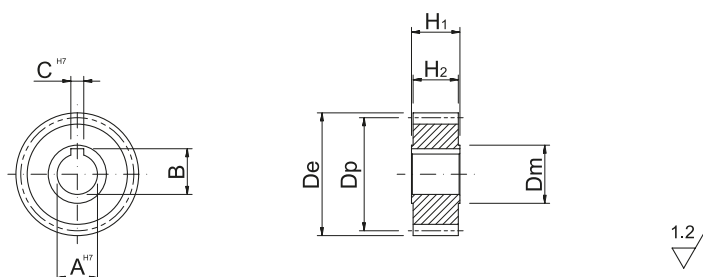
Superficie: finitura di utensile - Surface: milled teeth

Trattamento termico: non incluso

Heat-treatment: not included

R= 700 N/mm² (resistenza carico a rottura)

R= 700 N/mm² (tensile strength)



In caso di prodotti personalizzati a disegno, invia la tua richiesta a - In case you need customized products, please send your request to: info@gambinimeccanica.it

CODICE ITEM CODE	M	Z	De	Dp	CH7	B	AH7	H2	H1	Dmh8
1SG19S015016S	1,5	16	27	24	4	11,5	10	28	30	20
1SG19S015018S	1,5	18	30	27	5	17,3	15	28	30	22
1SG19S015020S	1,5	20	33	30	5	17,3	15	28	30	25
1SG19S015024S	1,5	24	39	36	6	22,8	20	28	30	32
1SG19S015030S	1,5	30	48	45	8	28,3	25	28	30	40
1SG19S015040S	1,5	40	63	60	12	43,3	40	28	30	55
1SG19S020016S	2	16	36	32	5	17,3	15	28	30	25
1SG19S020018S	2	18	40	36	5	17,3	15	28	30	30
1SG19S020020S	2	20	44	40	6	22,8	20	28	30	30
1SG19S020022S	2	22	48	44	8	28,3	25	28	30	36
1SG19S020024S	2	24	52	48	8	28,3	25	28	30	36
1SG19S020030S	2	30	64	60	8	28,3	25	28	30	36
1SG19S020040S	2	40	84	80	12	43,3	40	28	30	62
1SG19S030020S	3	20	66	60	6	22,8	20	28	30	30
1SG19S030022S	3	22	72	66	8	28,3	25	28	30	36
1SG19S030024S	3	24	78	72	8	28,3	25	28	30	36
1SG19S030040S	3	40	126	120	12	43,3	40	28	30	62
1SG19S031020S	3,183	20	70,028	63,662	6	22,8	20	28	30	30
1SG19S031022S	3,183	22	76,394	70,028	8	28,3	25	28	30	36
1SG19S031024S	3,183	24	82,76	76,394	8	28,3	25	28	30	36
1SG19S031030S	3,183	30	101,859	95,493	8	28,3	25	28	30	36
1SG19S040020S	4	20	88	80	10	38,3	35	40	50	55
1SG19S040025S	4	25	108	100	10	38,3	35	40	50	55
1SG19S040030S	4	30	128	120	10	38,3	35	40	50	55
1SG19S040032S	4	32	136	128	10	38,3	35	40	50	55
1SG19S050020S	5	20	110	100	14	48,8	45	50	60	68
1SG19S050024S	5	24	130	120	14	48,8	45	50	60	68
1SG19S050025S	5	25	135	125	14	48,8	45	50	60	68
1SG19S050030S	5	30	160	150	14	48,8	45	50	60	68
1SG19S060020S	6	20	132	120	16	59,3	55	60	70	80
1SG19S060021S	6	21	138	126	16	59,3	55	60	70	80
1SG19S060024S	6	24	156	144	16	59,3	55	60	70	80
1SG19S060025S	6	25	162	150	16	59,3	55	60	70	80
1SG19S060030S	6	30	192	180	16	59,3	55	60	70	80
1SG19S080020S	8	20	176	160	20	79,9	75	80	100	110
1SG19S100020S	10	20	220	200	22	90,4	85	100	120	125

Dentatura Dritta SERIE 465

Straight tooth system SERIES 465

Q9 - C45

Mozzo Lungo Long Hub

Qualità - Quality: 9e25

Materiale - Material: C45

Angolo di pressione - Pressure angle: 20°

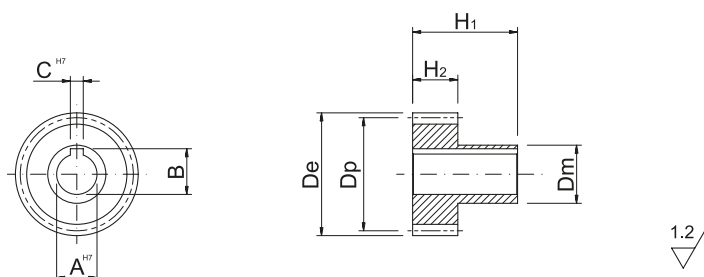
Superficie: finitura di utensile - Surface: milled teeth

Trattamento termico: non incluso

Heat-treatment: not included

R= 700 N/mm² (resistenza carico a rottura)

R= 700 N/mm² (tensile strength)



In caso di prodotti personalizzati a disegno, invia la tua richiesta a - In case you need customized products, please send your request to: info@gambinimeccanica.it

CODICE ITEM CODE	M	Z	De	Dp	CH7	B	AH7	H2	H1	Dmh8
1SG19S015016L	1,5	16	27	24	4	11,5	10	28	65	20
1SG19S015018L	1,5	18	30	27	5	17,3	15	28	65	22
1SG19S015020L	1,5	20	33	30	5	17,3	15	28	65	25
1SG19S015024L	1,5	24	39	36	6	22,8	20	28	65	32
1SG19S015030L	1,5	30	48	45	8	28,3	25	28	65	40
1SG19S015040L	1,5	40	63	60	12	43,3	40	28	65	55
1SG19S020016L	2	16	36	32	5	17,3	15	28	65	25
1SG19S020018L	2	18	40	36	5	17,3	15	28	65	30
1SG19S020020L	2	20	44	40	6	22,8	20	28	65	30
1SG19S020022L	2	22	48	44	8	28,3	25	28	65	36
1SG19S020024L	2	24	52	48	8	28,3	25	28	65	36
1SG19S020030L	2	30	64	60	8	28,3	25	28	65	36
1SG19S020040L	2	40	84	80	12	43,3	40	28	65	62
1SG19S030020L	3	20	66	60	6	22,8	20	28	65	30
1SG19S030022L	3	22	72	66	8	28,3	25	28	65	36
1SG19S030024L	3	24	78	72	8	28,3	25	28	65	36
1SG19S030040L	3	40	126	120	12	43,3	40	28	65	62
1SG19S031020L	3,183	20	70,028	63,662	6	22,8	20	28	65	30
1SG19S031022L	3,183	22	76,394	70,028	8	28,3	25	28	65	36
1SG19S031024L	3,183	24	82,76	76,394	8	28,3	25	28	65	36
1SG19S031030L	3,183	30	101,859	95,493	8	28,3	25	28	65	36
1SG19S040020L	4	20	88	80	10	38,3	35	40	75	55
1SG19S040025L	4	25	108	100	10	38,3	35	40	75	55
1SG19S040030L	4	30	128	120	10	38,3	35	40	75	55
1SG19S040032L	4	32	136	128	10	38,3	35	40	75	55
1SG19S050020L	5	20	110	100	14	48,8	45	50	75	68
1SG19S050024L	5	24	130	120	14	48,8	45	50	75	68
1SG19S050025L	5	25	135	125	14	48,8	45	50	75	68
1SG19S050030L	5	30	160	150	14	48,8	45	50	75	68
1SG19S060020L	6	20	132	120	16	59,3	55	60	120	80
1SG19S060021L	6	21	138	126	16	59,3	55	60	120	80
1SG19S060024L	6	24	156	144	16	59,3	55	60	120	80
1SG19S060025L	6	25	162	150	16	59,3	55	60	120	80
1SG19S060030L	6	30	192	180	16	59,3	55	60	120	80
1SG19S080020L	8	20	176	160	20	79,9	75	80	145	110
1SG19S100020L	10	20	220	200	22	90,4	85	100	165	125



Dentatura Dritta SERIE 470

Straight tooth system SERIES 470

Q10 - C45

Mozzo Corto Short Hub

Qualità - Quality: **10e25** / Materiale - Material: **C45**

Angolo di pressione - Pressure angle: **20°**

Superficie: finitura di utensile, foro interno rettificato

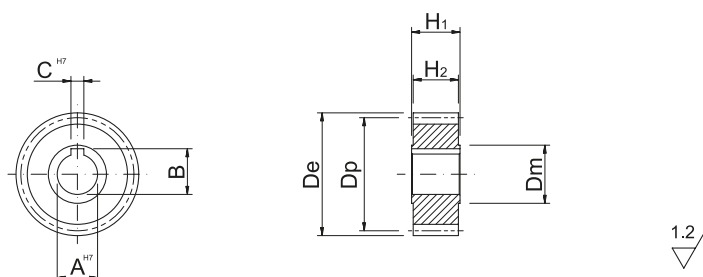
Surface: milled teeth, ground internal hole

Trattamento termico: denti temprati ad induzione 55-58 HRC

Heat-treatment: induction-hardened teeth 55-58 HRC

R= 700 N/mm² (resistenza carico a rottura)

R= 700 N/mm² (tensile strength)



In caso di prodotti personalizzati a disegno, invia la tua richiesta a - In case you need customized products, please send your request to: info@gambinimeccanica.it

CODICE ITEM CODE	M	Z	De	Dp	CH7	B	AH7	H2	H1	Dmh8
1SG11S015016S	1,5	16	27	24	4	11,5	10	28	30	20
1SG11S015018S	1,5	18	30	27	5	17,3	15	28	30	22
1SG11S015020S	1,5	20	33	30	5	17,3	15	28	30	25
1SG11S015024S	1,5	24	39	36	6	22,8	20	28	30	32
1SG11S015030S	1,5	30	48	45	8	28,3	25	28	30	40
1SG11S015040S	1,5	40	63	60	12	43,3	40	28	30	55
1SG11S020016S	2	16	36	32	5	17,3	15	28	30	25
1SG11S020018S	2	18	40	36	5	17,3	15	28	30	30
1SG11S020020S	2	20	44	40	6	22,8	20	28	30	30
1SG11S020022S	2	22	48	44	8	28,3	25	28	30	36
1SG11S020024S	2	24	52	48	8	28,3	25	28	30	36
1SG11S020030S	2	30	64	60	8	28,3	25	28	30	36
1SG11S020040S	2	40	84	80	12	43,3	40	28	30	62
1SG11S030020S	3	20	66	60	6	22,8	20	28	30	30
1SG11S030022S	3	22	72	66	8	28,3	25	28	30	36
1SG11S030024S	3	24	78	72	8	28,3	25	28	30	36
1SG11S030040S	3	40	126	120	12	43,3	40	28	30	62
1SG11S031020S	3,183	20	70,028	63,662	6	22,8	20	28	30	30
1SG11S031022S	3,183	22	76,394	70,028	8	28,3	25	28	30	36
1SG11S031024S	3,183	24	82,76	76,394	8	28,3	25	28	30	36
1SG11S031030S	3,183	30	101,859	95,493	8	28,3	25	28	30	36
1SG11S040020S	4	20	88	80	10	38,3	35	40	50	55
1SG11S040025S	4	25	108	100	10	38,3	35	40	50	55
1SG11S040030S	4	30	128	120	10	38,3	35	40	50	55
1SG11S040032S	4	32	136	128	10	38,3	35	40	50	55
1SG11S050020S	5	20	110	100	14	48,8	45	50	60	68
1SG11S050024S	5	24	130	120	14	48,8	45	50	60	68
1SG11S050025S	5	25	135	125	14	48,8	45	50	60	68
1SG11S050030S	5	30	160	150	14	48,8	45	50	60	68
1SG11S060020S	6	20	132	120	16	59,3	55	60	70	80
1SG11S060021S	6	21	138	126	16	59,3	55	60	70	80
1SG11S060024S	6	24	156	144	16	59,3	55	60	70	80
1SG11S060025S	6	25	162	150	16	59,3	55	60	70	80
1SG11S060030S	6	30	192	180	16	59,3	55	60	70	80
1SG11S080020S	8	20	176	160	20	79,9	75	80	100	110
1SG11S100020S	10	20	220	200	22	90,4	85	100	120	125

Dentatura Dritta SERIE 475

Straight tooth system SERIES 475

Q10 - C45

Mozzo Lungo Long Hub

Qualità - Quality: **10e25** / Materiale - Material: **C45**

Angolo di pressione - Pressure angle: **20°**

Superficie: finitura di utensile, foro interno rettificato

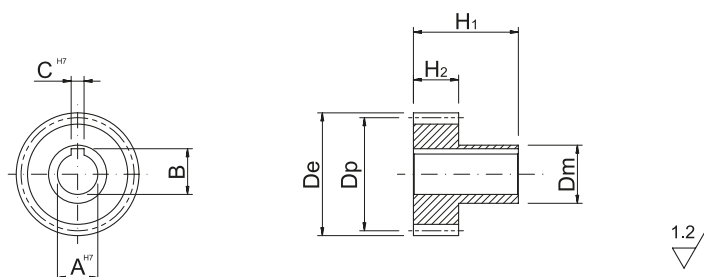
Surface: milled teeth, ground internal hole

Trattamento termico: denti temprati ad induzione 55-58 HRC

Heat-treatment: induction-hardened teeth 55-58 HRC

R= 700 N/mm² (resistenza carico a rottura)

R= 700 N/mm² (tensile strength)



In caso di prodotti personalizzati a disegno, invia la tua richiesta a - In case you need customized products, please send your request to: info@gambinimeccanica.it

CODICE ITEM CODE	M	Z	De	Dp	CH7	B	AH7	H2	H1	Dmh8
1SG11S015016L	1,5	16	27	24	4	11,5	10	28	65	20
1SG11S015018L	1,5	18	30	27	5	17,3	15	28	65	22
1SG11S015020L	1,5	20	33	30	5	17,3	15	28	65	25
1SG11S015024L	1,5	24	39	36	6	22,8	20	28	65	32
1SG11S015030L	1,5	30	48	45	8	28,3	25	28	65	40
1SG11S015040L	1,5	40	63	60	12	43,3	40	28	65	55
1SG11S020016L	2	16	36	32	5	17,3	15	28	65	25
1SG11S020018L	2	18	40	36	5	17,3	15	28	65	30
1SG11S020020L	2	20	44	40	6	22,8	20	28	65	30
1SG11S020022L	2	22	48	44	8	28,3	25	28	65	36
1SG11S020024L	2	24	52	48	8	28,3	25	28	65	36
1SG11S020030L	2	30	64	60	8	28,3	25	28	65	36
1SG11S020040L	2	40	84	80	12	43,3	40	28	65	62
1SG11S030020L	3	20	66	60	6	22,8	20	28	65	30
1SG11S030022L	3	22	72	66	8	28,3	25	28	65	36
1SG11S030024L	3	24	78	72	8	28,3	25	28	65	36
1SG11S030040L	3	40	126	120	12	43,3	40	28	65	62
1SG11S031020L	3,183	20	70,028	63,662	6	22,8	20	28	65	30
1SG11S031022L	3,183	22	76,394	70,028	8	28,3	25	28	65	36
1SG11S031024L	3,183	24	82,76	76,394	8	28,3	25	28	65	36
1SG11S031030L	3,183	30	101,859	95,493	8	28,3	25	28	65	36
1SG11S040020L	4	20	88	80	10	38,3	35	40	75	55
1SG11S040025L	4	25	108	100	10	38,3	35	40	75	55
1SG11S040030L	4	30	128	120	10	38,3	35	40	75	55
1SG11S040032L	4	32	136	128	10	38,3	35	40	75	55
1SG11S050020L	5	20	110	100	14	48,8	45	50	75	68
1SG11S050024L	5	24	130	120	14	48,8	45	50	75	68
1SG11S050025L	5	25	135	125	14	48,8	45	50	75	68
1SG11S050030L	5	30	160	150	14	48,8	45	50	75	68
1SG11S060020L	6	20	132	120	16	59,3	55	60	120	80
1SG11S060021L	6	21	138	126	16	59,3	55	60	120	80
1SG11S060024L	6	24	156	144	16	59,3	55	60	120	80
1SG11S060025L	6	25	162	150	16	59,3	55	60	120	80
1SG11S060030L	6	30	192	180	16	59,3	55	60	120	80
1SG11S080020L	8	20	176	160	20	79,9	75	80	145	110
1SG11S100020L	10	20	220	200	22	90,4	85	100	165	125