

CREMAGLIERE A DENTI DRITTI

STRAIGHT RACKS

INDICE SERIE

SERIES INDEX

SERIE SERIES	QUALITÀ QUALITY	MATERIALE MATERIAL	TRATTAMENTO TERMICO HEAT-TREATMENT	HRC	SUPERFICIE SURFACE	FORI DRILLING	MODULI DISPONIBILI MODULES	PAG PAGE
105H	5	16MnCr5	carburazione e denti temprati ad induzione carburized and induction-hardened teeth	60	rettificata ground	SI YES	2_3_4_5_6	58
105	5	16MnCr5	carburazione e denti temprati ad induzione carburized and induction-hardened teeth	60	rettificata ground	NO	2_3_4_5_6	58
110H	6	16MnCr5	carburazione e denti temprati ad induzione carburized and induction-hardened teeth	60	rettificata ground	SI YES	1_2_3_4_5_6	59
110	6	16MnCr5	carburazione e denti temprati ad induzione carburized and induction-hardened teeth	60	rettificata ground	NO	1_2_3_4_5_6	59
115H	6	C45	denti temprati ad induzione induction-hardened teeth	55-58	rettificata ground	SI YES	1_15_2_3_4_5_6_8_10_12	60
115	6	C45	denti temprati ad induzione induction-hardened teeth	55-58	rettificata ground	NO	1_15_2_3_4_5_6_8_10_12	60
120H	6	SAE1141	denti temprati ad induzione induction-hardened teeth	56-60	rettificata ground	SI YES	1_15_2_3_4_5_6	61
120	6	SAE1141	denti temprati ad induzione induction-hardened teeth	56-60	rettificata ground	NO	1_15_2_3_4_5_6	61
125H	7	C45	denti temprati ad induzione induction-hardened teeth	55-58	rettificata ground	SI YES	2_3_4_5_6	62
125	7	C45	denti temprati ad induzione induction-hardened teeth	55-58	rettificata ground	NO	2_3_4_5_6	62
130H	7	SAE1141	denti temprati ad induzione induction-hardened teeth	56-60	rettificata ground	SI YES	2_3_4_5_6	63
130	7	SAE1141	denti temprati ad induzione induction-hardened teeth	56-60	rettificata ground	NO	2_3_4_5_6	63
132H	8	C45	denti temprati ad induzione induction-hardened teeth	55-58	lato inferiore e denti rettificati ground backside, ground teeth	SI YES	2_3_4_5_6	64
132	8	C45	denti temprati ad induzione induction-hardened teeth	55-58	lato inferiore e denti rettificati ground backside, ground teeth	NO	2_3_4_5_6	64
134H	8	SAE1141	denti temprati ad induzione induction-hardened teeth	56-60	lato inferiore e denti rettificati ground backside, ground teeth	SI YES	2_3_4_5_6	65
134	8	SAE1141	denti temprati ad induzione induction-hardened teeth	56-60	lato inferiore e denti rettificati ground backside, ground teeth	NO	2_3_4_5_6	65
135H	8	C45	denti temprati ad induzione induction-hardened teeth	55-58	fresata milled	SI YES	2_3_4_5_6	66

CREMAGLIERE A DENTI DRITTI

STRAIGHT RACKS

INDICE SERIE

SERIES INDEX

SERIE SERIES	QUALITÀ QUALITY	MATERIALE MATERIAL	TRATTAMENTO TERMICO HEAT-TREATMENT	HRC	SUPERFICIE SURFACE	FORI DRILLING	MODULI DISPONIBILI MODULES	PAG PAGE
135	8	C45	denti temprati ad induzione induction-hardened teeth	55-58	fresata milled	NO	2_3_4_5_6	66
140H	8	SAE1141	denti temprati ad induzione induction-hardened teeth	56-60	fresata milled	SI YES	2_3_4_5_6	67
140	8	SAE1141	denti temprati ad induzione induction-hardened teeth	56-60	fresata milled	NO	2_3_4_5_6	67
145H	8	42CrMo4	non incluso not included	-	fresata milled	SI YES	2_3_4_5	68
145	8	42CrMo4	non incluso not included	-	fresata milled	NO	2_3_4_5	68
150H	9	C45	non incluso not included	-	trafilata cold drawn	SI YES	1_1,5_2_3_4_5_6_8_10_12	69
150	9	C45	non incluso not included	-	trafilata cold drawn	NO	1_1,5_2_3_4_5_6_8_10_12	69
155H	9	SAE1141	non incluso not included	-	trafilata cold drawn	SI YES	1_1,5_2_3_3,183_4_5_6	70
155	9	SAE1141	non incluso not included	-	trafilata cold drawn	NO	1_1,5_2_3_3,183_4_5_6	70
160H	10	C45	denti temprati ad induzione induction-hardened teeth	55-58	trafilata cold drawn	SI YES	1_1,5_2_3_4_5_6_8_10_12	71
160	10	C45	denti temprati ad induzione induction-hardened teeth	55-58	trafilata cold drawn	NO	1_1,5_2_3_4_5_6_8_10_12	71
165H	10	SAE1141	denti temprati ad induzione induction-hardened teeth	56-60	trafilata cold drawn	SI YES	1_2_3_4_5_6	72
165	10	SAE1141	denti temprati ad induzione induction-hardened teeth	56-60	trafilata cold drawn	NO	1_2_3_4_5_6	72
170H	-	INOX AISI 304	non incluso not included	-	trafilata cold drawn	SI YES	1_2_3_4_5_6	73
170	-	INOX AISI 304	non incluso not included	-	trafilata cold drawn	NO	1_2_3_4_5_6	73
175	-	POM	non incluso not included	-	-	NO	1_1,5_1,75_2_2,5_3_3,183_4	74

Dentatura Dritta SERIE 105H

Straight tooth system SERIES 105H

Q5 - 16MnCr5

Qualità - Quality: 5

Materiale - Material: 16MnCr5

Angolo di pressione - Pressure angle: 20°

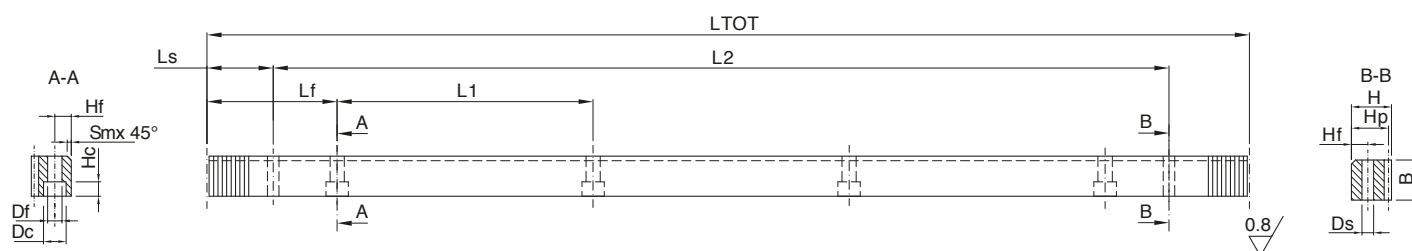
Superficie: rettificata - Surface: ground

Trattamento termico: carburazione e denti temprati ad induzione 60 HRC

Heat-treatment: carburized and induction-hardened teeth 60 HRC

R= 1000 N/mm² (resistenza carico a rottura)

R= 1000 N/mm² (tensile strength)



In caso di prodotti personalizzati a disegno, invia la tua richiesta a - In case you need customized products, please send your request to: info@gambinimeccanica.it

CODICE ITEM CODE	M	LTOT	Lf	L1	Ls	B	H	Hf	Ds	Sm	Df	Dc	Hc	Hp	Z	L2	N°fori holes	PESO kg
1SR35S020050H	2	502,655	62,832	125,664	31,3	24	24	8	5,7	2	7	11	7	22	80	440,055	4	2,02
1SR35S020101H	2	1005,310	62,832	125,664	31,3	24	24	8	5,7	2	7	11	7	22	160	942,710	8	4,05
1SR35S030051H	3	508,938	63,617	127,235	34,4	29	29	9	7,7	2	10	15	9	26	54	440,138	4	2,87
1SR35S030102H	3	1017,876	63,617	127,235	34,4	29	29	9	7,7	2	10	15	9	26	108	949,076	8	5,76
1SR35S040050H	4	502,655	62,832	125,664	37,5	39	39	12	7,7	3	10	15	9	35	40	427,655	4	5,2
1SR35S040101H	4	1005,310	62,832	125,664	37,5	39	39	12	7,7	3	10	15	9	35	80	930,310	8	10,42
1SR35S050050H	5	502,655	62,832	125,664	30,1	49	39	12	11,7	3	14	20	13	34	32	442,455	4	6,13
1SR35S050101H	5	1005,310	62,832	125,664	30,1	49	39	12	11,7	3	14	20	13	34	64	945,110	8	12,34
1SR35S060051H	6	508,938	63,617	127,235	31,4	59	49	16	15,7	3	18	26	17	43	27	446,138	4	9,25
1SR35S060102H	6	1017,876	63,617	127,235	31,4	59	49	16	15,7	3	18	26	17	43	54	955,076	8	18,68

Dentatura Dritta SERIE 110H

Straight tooth system SERIES 110H

Q6 - 16MnCr5

Qualità - Quality: 6

Materiale - Material: 16MnCr5

Angolo di pressione - Pressure angle: 20°

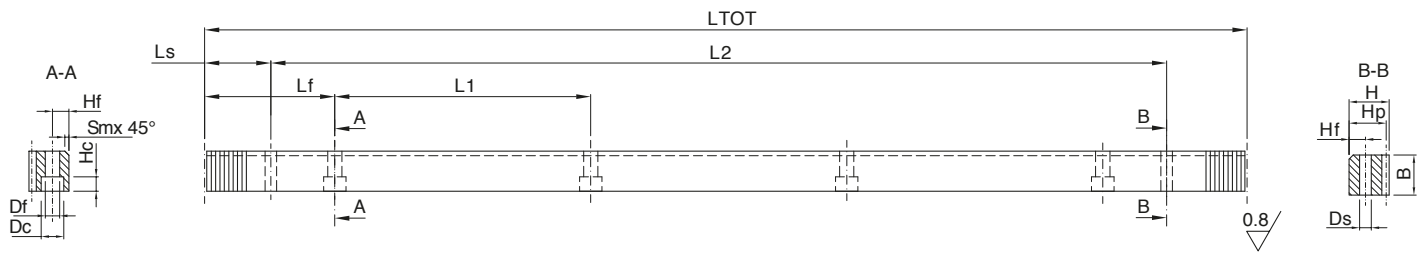
Superficie: rettificata - Surface: ground

Trattamento termico: carburazione e denti temprati ad induzione 60 HRC

Heat-treatment: carburized and induction-hardened teeth 60 HRC

R= 1000 N/mm² (resistenza carico a rottura)

R= 1000 N/mm² (tensile strength)



In caso di prodotti personalizzati a disegno, invia la tua richiesta a - In case you need customized products, please send your request to: info@gambinimeccanica.it

CODICE ITEM CODE	M	LTOT	Lf	L1	Ls	B	H	Hf	Ds	Sm	Df	Dc	Hc	Hp	Z	L2	N°fori holes	PESO kg
1SR36S010050H	1	502,655	62,832	125,664	31,3	20	20	8	5,7	2	7	11	7	19	160	440,055	4	1,45
1SR36S010101H	1	1005,310	62,832	125,664	31,3	20	20	8	5,7	2	7	11	7	19	320	942,710	8	2,91
1SR36S020050H	2	502,655	62,832	125,664	31,3	24	24	8	5,7	2	7	11	7	22	80	440,055	4	2,02
1SR36S020101H	2	1005,310	62,832	125,664	31,3	24	24	8	5,7	2	7	11	7	22	160	942,710	8	4,05
1SR36S030051H	3	508,938	63,617	127,235	34,4	29	29	9	7,7	2	10	15	9	26	54	440,138	4	2,87
1SR36S030102H	3	1017,876	63,617	127,235	34,4	29	29	9	7,7	2	10	15	9	26	108	949,076	8	5,76
1SR36S040050H	4	502,655	62,832	125,664	37,5	39	39	12	7,7	3	10	15	9	35	40	427,655	4	5,2
1SR36S040101H	4	1005,310	62,832	125,664	37,5	39	39	12	7,7	3	10	15	9	35	80	930,310	8	10,42
1SR36S050050H	5	502,655	62,832	125,664	30,1	49	39	12	11,7	3	14	20	13	34	32	442,455	4	6,13
1SR36S050101H	5	1005,310	62,832	125,664	30,1	49	39	12	11,7	3	14	20	13	34	64	945,110	8	12,34
1SR36S060051H	6	508,938	63,617	127,235	31,4	59	49	16	15,7	3	18	26	17	43	27	446,138	4	9,25
1SR36S060102H	6	1017,876	63,617	127,235	31,4	59	49	16	15,7	3	18	26	17	43	54	955,076	8	18,68

Dentatura Dritta SERIE 115H

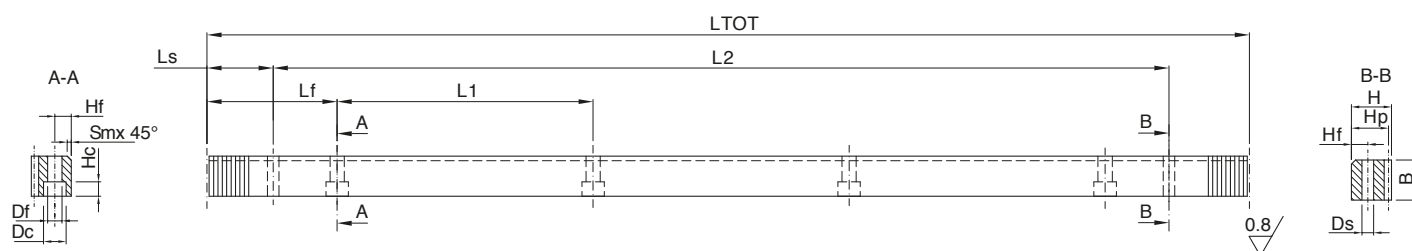
Straight tooth system SERIES 115H

Q6 - C45

Qualità - Quality: 6
Materiale - Material: C45
Angolo di pressione - Pressure angle: 20°
Superficie: rettificata - Surface: ground
Trattamento termico: denti temprati ad induzione 55-58 HRC

Heat-treatment: Induction-hardened teeth 55-58 HRC

R= 700 N/mm² (resistenza carico a rottura)

 R= 700 N/mm² (tensile strength)


* Per lamature prefiori spine vedere pagina 19 - For pin pre-bore dimensions see page 19

 In caso di prodotti personalizzati a disegno, invia la tua richiesta a - In case you need customized products, please send your request to: info@gambinimeccanica.it

CODICE ITEM CODE	M	LTOT	Lf	L1	Ls	B	H	Hf	Ds	Sm	Df	Dc	Hc	Hp	Z	L2	N°fori holes	PESO kg
1SR16S010050H	1	502,655	62,832	125,664	31,3	19	19	8	5,7	2	7	11	7	18	160	440,055	4	1,3
1SR16S010101H	1	1005,310	62,832	125,664	31,3	19	19	8	5,7	2	7	11	7	18	320	942,710	8	2,61
1SR16S010151H	1	1507,964	62,832	125,664	31,3	19	19	8	5,7	2	7	11	7	18	480	1445,364	12	3,92
1SR16S015051H	1,5	508,938	63,617	127,235	34,4	19	19	8	5,7	2	7	11	7	17,5	108	440,138	4	1,28
1SR16S015102H	1,5	1017,876	63,617	127,235	34,4	19	19	8	5,7	2	7	11	7	17,5	216	949,076	8	2,56
1SR16S015153H	1,5	1526,814	63,617	127,235	34,4	19	19	8	5,7	2	7	11	7	17,5	324	1458,014	12	3,85
1SR16S020050H	2	502,655	62,832	125,664	31,3	24	24	8	5,7	2	7	11	7	22	80	440,055	4	2,02
1SR16S020101H	2	1005,310	62,832	125,664	31,3	24	24	8	5,7	2	7	11	7	22	160	942,710	8	4,05
1SR16S020151H	2	1507,964	62,832	125,664	31,3	24	24	8	5,7	2	7	11	7	22	240	1445,364	12	6,08
1SR16S020201H	2	2010,619	62,832	125,664	31,3	24	24	8	5,7	2	7	11	7	22	320	1948,019	16	8,11
1SR16S030051H	3	508,938	63,617	127,235	34,4	29	29	9	7,7	2	10	15	9	26	54	440,138	4	2,87
1SR16S030102H	3	1017,876	63,617	127,235	34,4	29	29	9	7,7	2	10	15	9	26	108	949,076	8	5,76
1SR16S030153H	3	1526,814	63,617	127,235	34,4	29	29	9	7,7	2	10	15	9	26	162	1458,014	12	8,66
1SR16S030204H	3	2035,752	63,617	127,235	34,4	29	29	9	7,7	2	10	15	9	26	216	1966,952	16	11,55
1SR16S040050H	4	502,655	62,832	125,664	37,5	39	39	12	7,7	3	10	15	9	35	40	427,655	4	5,2
1SR16S040101H	4	1005,310	62,832	125,664	37,5	39	39	12	7,7	3	10	15	9	35	80	930,310	8	10,42
1SR16S040151H	4	1507,964	62,832	125,664	37,5	39	39	12	7,7	3	10	15	9	35	120	1432,964	12	15,65
1SR16S040201H	4	2010,619	62,832	125,664	37,5	39	39	12	7,7	3	10	15	9	35	160	1935,619	16	20,87
1SR16S050050H	5	502,655	62,832	125,664	30,1	49	49	12	11,7	3	14	20	13	34	32	442,455	4	6,13
1SR16S050101H	5	1005,310	62,832	125,664	30,1	49	49	12	11,7	3	14	20	13	34	64	945,110	8	12,34
1SR16S050151H	5	1507,964	62,832	125,664	30,1	49	49	12	11,7	3	14	20	13	34	96	1447,764	12	18,55
1SR16S050201H	5	2010,619	62,832	125,664	30,1	49	49	12	11,7	3	14	20	13	34	128	1950,419	16	24,76
1SR16S060051H	6	508,938	63,617	127,235	31,4	59	59	16	15,7	3	18	26	17	43	27	446,138	4	9,25
1SR16S060102H	6	1017,876	63,617	127,235	31,4	59	59	16	15,7	3	18	26	17	43	54	955,076	8	18,68
1SR16S060153H	6	1526,814	63,617	127,235	31,4	59	59	16	15,7	3	18	26	17	43	81	1464,014	12	28,12
1SR16S060204H	6	2035,752	63,617	127,235	31,4	59	59	16	15,7	3	18	26	17	43	108	1972,952	16	37,55
1SR16S080050H	8	502,655	62,832	125,664	26,6	79	79	25	19,7/21*	3	22	33	21	71	20	449,455	4	20,35
1SR16S080101H	8	1005,310	62,832	125,664	26,6	79	79	25	19,7/21*	3	22	33	21	71	40	952,110	8	41,08
1SR16S080151H	8	1507,964	62,832	125,664	26,6	79	79	25	19,7/21*	3	22	33	21	71	60	1454,764	12	61,8
1SR16S100101H	10	1005,310	62,832	125,664	125,66	99	99	32	19,7/21*	3	33	48	32	89	32	753,990	8	61,36
1SR16S120102H	12	1017,876	63,617	127,235	127,23	120	120	40	19,7/21*	3	39	58	38	108	27	763,416	8	89,84

Dentatura Dritta SERIE 120H

Straight tooth system SERIES 120H

Q6 - SAE1141

Qualità - Quality: 6

Materiale - Material: SAE1141

Angolo di pressione - Pressure angle: 20°

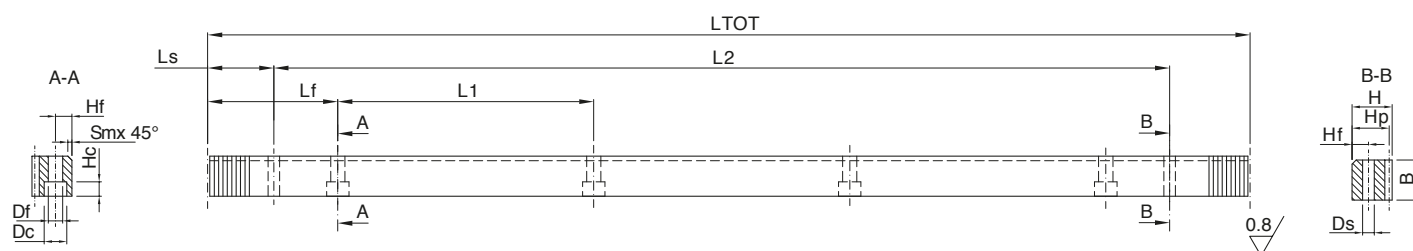
Superficie: rettificata - Surface: ground

Trattamento termico: denti temprati ad induzione 56-60 HRC

Heat-treatment: Induction-hardened teeth 56-60 HRC

R= 800 N/mm² (resistenza carico a rottura)

R= 800 N/mm² (tensile strength)



In caso di prodotti personalizzati a disegno, invia la tua richiesta a - In case you need customized products, please send your request to: info@gambinimeccanica.it

CODICE ITEM CODE	M	LTOT	Lf	L1	Ls	B	H	Hf	Ds	Sm	Df	Dc	Hc	Hp	Z	L2	N°fori holes	PESO kg
1SR26S010050H	1	502,655	62,832	125,664	31,3	19	19	8	5,7	2	7	11	7	18	160	440,055	4	1,3
1SR26S010101H	1	1005,310	62,832	125,664	31,3	19	19	8	5,7	2	7	11	7	18	320	942,710	8	2,61
1SR26S010151H	1	1507,964	62,832	125,664	31,3	19	19	8	5,7	2	7	11	7	18	480	1445,364	12	3,92
1SR26S015051H	1,5	508,938	63,617	127,235	34,4	19	19	8	5,7	2	7	11	7	17,5	108	440,138	4	1,26
1SR26S015102H	1,5	1017,876	63,617	127,235	34,4	19	19	8	5,7	2	7	11	7	17,5	216	949,076	8	2,56
1SR26S015153H	1,5	1526,814	63,617	127,235	34,4	19	19	8	5,7	2	7	11	7	17,5	324	1458,014	12	3,85
1SR26S020050H	2	502,655	62,832	125,664	31,3	24	24	8	5,7	2	7	11	7	22	80	440,055	4	2,02
1SR26S020101H	2	1005,310	62,832	125,664	31,3	24	24	8	5,7	2	7	11	7	22	160	942,710	8	4,05
1SR26S020151H	2	1507,964	62,832	125,664	31,3	24	24	8	5,7	2	7	11	7	22	240	1445,364	12	6,08
1SR26S020201H	2	2010,619	62,832	125,664	31,3	24	24	8	5,7	2	7	11	7	22	320	1948,019	16	8,11
1SR26S030051H	3	508,938	63,617	127,235	34,4	29	29	9	7,7	2	10	15	9	26	54	440,138	4	2,87
1SR26S030102H	3	1017,876	63,617	127,235	34,4	29	29	9	7,7	2	10	15	9	26	108	949,076	8	5,76
1SR26S030153H	3	1526,814	63,617	127,235	34,4	29	29	9	7,7	2	10	15	9	26	162	1458,014	12	8,66
1SR26S030204H	3	2035,752	63,617	127,235	34,4	29	29	9	7,7	2	10	15	9	26	216	1966,952	16	11,55
1SR26S040050H	4	502,655	62,832	125,664	37,5	39	39	12	7,7	3	10	15	9	35	40	427,655	4	5,2
1SR26S040101H	4	1005,310	62,832	125,664	37,5	39	39	12	7,7	3	10	15	9	35	80	930,310	8	10,42
1SR26S040151H	4	1507,964	62,832	125,664	37,5	39	39	12	7,7	3	10	15	9	35	120	1432,964	12	15,65
1SR26S040201H	4	2010,619	62,832	125,664	37,5	39	39	12	7,7	3	10	15	9	35	160	1935,619	16	20,87
1SR26S050050H	5	502,655	62,832	125,664	30,1	49	49	12	11,7	3	14	20	13	34	32	442,455	4	6,13
1SR26S050101H	5	1005,310	62,832	125,664	30,1	49	49	12	11,7	3	14	20	13	34	64	945,110	8	12,34
1SR26S050151H	5	1507,964	62,832	125,664	30,1	49	49	12	11,7	3	14	20	13	34	96	1447,764	12	18,55
1SR26S050201H	5	2010,619	62,832	125,664	30,1	49	49	12	11,7	3	14	20	13	34	128	1950,419	16	24,76
1SR26S060051H	6	508,938	63,617	127,235	31,4	59	59	16	15,7	3	18	26	17	43	27	446,138	4	9,25
1SR26S060102H	6	1017,876	63,617	127,235	31,4	59	59	16	15,7	3	18	26	17	43	54	955,076	8	18,68
1SR26S060153H	6	1526,814	63,617	127,235	31,4	59	59	16	15,7	3	18	26	17	43	81	1464,014	12	28,12
1SR26S060204H	6	2035,752	63,617	127,235	31,4	59	59	16	15,7	3	18	26	17	43	108	1972,952	16	37,55

Dentatura Dritta SERIE 125H

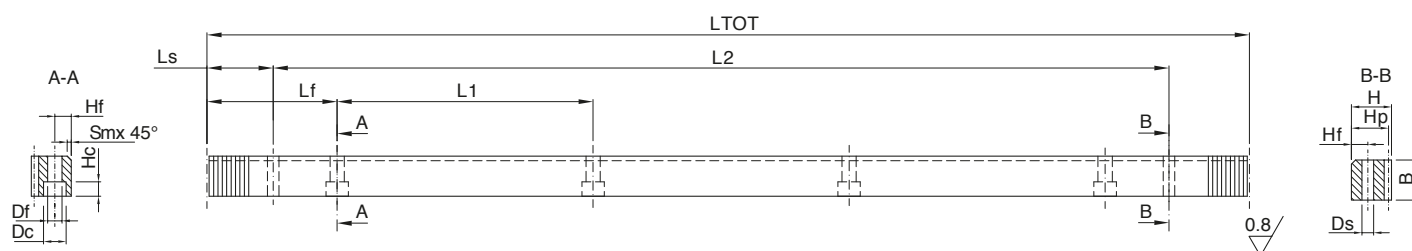
Straight tooth system SERIES 125H

Q7 - C45

Qualità - Quality: 7
Materiale - Material: C45
Angolo di pressione - Pressure angle: 20°
Superficie: rettificata - Surface: ground
Trattamento termico: denti temprati ad induzione 55-58 HRC

Heat-treatment: Induction-hardened teeth 55-58 HRC

R= 700 N/mm² (resistenza carico a rottura)

 R= 700 N/mm² (tensile strength)

 In caso di prodotti personalizzati a disegno, invia la tua richiesta a - In case you need customized products, please send your request to: info@gambinimeccanica.it

CODICE ITEM CODE	M	LTOT	Lf	L1	Ls	B	H	Hf	Ds	Sm	Df	Dc	Hc	Hp	Z	L2	N°fori holes	PESO kg
1SR17S020050H	2	502,655	62,832	125,664	31,3	24	24	8	5,7	2	7	11	7	22	80	440,055	4	2,02
1SR17S020101H	2	1005,310	62,832	125,664	31,3	24	24	8	5,7	2	7	11	7	22	160	942,710	8	4,05
1SR17S020151H	2	1507,964	62,832	125,664	31,3	24	24	8	5,7	2	7	11	7	22	240	1445,364	12	6,08
1SR17S020201H	2	2010,619	62,832	125,664	31,3	24	24	8	5,7	2	7	11	7	22	320	1948,019	16	8,11
1SR17S030051H	3	508,938	63,617	127,235	34,4	29	29	9	7,7	2	10	15	9	26	54	440,138	4	2,87
1SR17S030102H	3	1017,876	63,617	127,235	34,4	29	29	9	7,7	2	10	15	9	26	108	949,076	8	5,76
1SR17S030153H	3	1526,814	63,617	127,235	34,4	29	29	9	7,7	2	10	15	9	26	162	1458,014	12	8,66
1SR17S030204H	3	2035,752	63,617	127,235	34,4	29	29	9	7,7	2	10	15	9	26	216	1966,952	16	11,55
1SR17S040050H	4	502,655	62,832	125,664	37,5	39	39	12	7,7	3	10	15	9	35	40	427,655	4	5,2
1SR17S040101H	4	1005,310	62,832	125,664	37,5	39	39	12	7,7	3	10	15	9	35	80	930,310	8	10,42
1SR17S040151H	4	1507,964	62,832	125,664	37,5	39	39	12	7,7	3	10	15	9	35	120	1432,964	12	15,65
1SR17S040201H	4	2010,619	62,832	125,664	37,5	39	39	12	7,7	3	10	15	9	35	160	1935,619	16	20,87
1SR17S050050H	5	502,655	62,832	125,664	30,1	49	39	12	11,7	3	14	20	13	34	32	442,455	4	6,13
1SR17S050101H	5	1005,310	62,832	125,664	30,1	49	39	12	11,7	3	14	20	13	34	64	945,110	8	12,34
1SR17S050151H	5	1507,964	62,832	125,664	30,1	49	39	12	11,7	3	14	20	13	34	96	1447,764	12	18,55
1SR17S050201H	5	2010,619	62,832	125,664	30,1	49	39	12	11,7	3	14	20	13	34	128	1950,419	16	24,76
1SR17S060051H	6	508,938	63,617	127,235	31,4	59	49	16	15,7	3	18	26	17	43	27	446,138	4	9,25
1SR17S060102H	6	1017,876	63,617	127,235	31,4	59	49	16	15,7	3	18	26	17	43	54	955,076	8	18,68
1SR17S060153H	6	1526,814	63,617	127,235	31,4	59	49	16	15,7	3	18	26	17	43	81	1464,014	12	28,12
1SR17S060204H	6	2035,752	63,617	127,235	31,4	59	49	16	15,7	3	18	26	17	43	108	1972,952	16	37,55

Dentatura Dritta SERIE 130H

Straight tooth system SERIES 130H

Q7 - SAE1141

Qualità - Quality: **7**

Materiale - Material: **SAE1141**

Angolo di pressione - Pressure angle: **20°**

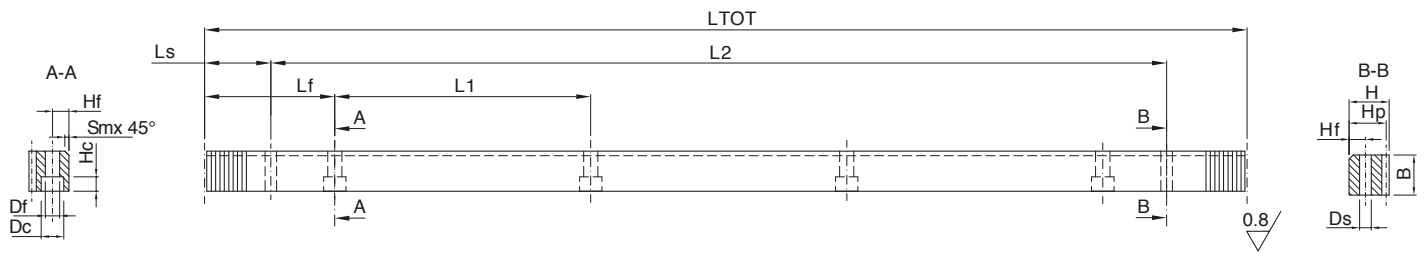
Superficie: rettificata - Surface: ground

Trattamento termico: denti temprati ad induzione 56-60 HRC

Heat-treatment: Induction-hardened teeth 56-60 HRC

R= 800 N/mm² (resistenza carico a rottura)

R= 800 N/mm² (tensile strength)



In caso di prodotti personalizzati a disegno, invia la tua richiesta a - In case you need customized products, please send your request to: info@gambinimeccanica.it

CODICE ITEM CODE	M	LTOT	Lf	L1	Ls	B	H	Hf	Ds	Sm	Df	Dc	Hc	Hp	Z	L2	N°fori holes	PESO kg
1SR27S020050H	2	502,655	62,832	125,664	31,3	24	24	8	5,7	2	7	11	7	22	80	440,055	4	2,02
1SR27S020101H	2	1005,310	62,832	125,664	31,3	24	24	8	5,7	2	7	11	7	22	160	942,710	8	4,05
1SR27S020151H	2	1507,964	62,832	125,664	31,3	24	24	8	5,7	2	7	11	7	22	240	1445,364	12	6,08
1SR27S020201H	2	2010,619	62,832	125,664	31,3	24	24	8	5,7	2	7	11	7	22	320	1948,019	16	8,11
1SR27S030051H	3	508,938	63,617	127,235	34,4	29	29	9	7,7	2	10	15	9	26	54	440,138	4	2,87
1SR27S030102H	3	1017,876	63,617	127,235	34,4	29	29	9	7,7	2	10	15	9	26	108	949,076	8	5,76
1SR27S030153H	3	1526,814	63,617	127,235	34,4	29	29	9	7,7	2	10	15	9	26	162	1458,014	12	8,66
1SR27S030204H	3	2035,752	63,617	127,235	34,4	29	29	9	7,7	2	10	15	9	26	216	1966,952	16	11,55
1SR27S040050H	4	502,655	62,832	125,664	37,5	39	39	12	7,7	3	10	15	9	35	40	427,655	4	5,2
1SR27S040101H	4	1005,310	62,832	125,664	37,5	39	39	12	7,7	3	10	15	9	35	80	930,310	8	10,42
1SR27S040151H	4	1507,964	62,832	125,664	37,5	39	39	12	7,7	3	10	15	9	35	120	1432,964	12	15,65
1SR27S040201H	4	2010,619	62,832	125,664	37,5	39	39	12	7,7	3	10	15	9	35	160	1935,619	16	20,87
1SR27S050050H	5	502,655	62,832	125,664	30,1	49	39	12	11,7	3	14	20	13	34	32	442,455	4	6,13
1SR27S050101H	5	1005,310	62,832	125,664	30,1	49	39	12	11,7	3	14	20	13	34	64	945,110	8	12,34
1SR27S050151H	5	1507,964	62,832	125,664	30,1	49	39	12	11,7	3	14	20	13	34	96	1447,764	12	18,55
1SR27S050201H	5	2010,619	62,832	125,664	30,1	49	39	12	11,7	3	14	20	13	34	128	1950,419	16	24,76
1SR27S060051H	6	508,938	63,617	127,235	31,4	59	49	16	15,7	3	18	26	17	43	27	446,138	4	9,25
1SR27S060102H	6	1017,876	63,617	127,235	31,4	59	49	16	15,7	3	18	26	17	43	54	955,076	8	18,68
1SR27S060153H	6	1526,814	63,617	127,235	31,4	59	49	16	15,7	3	18	26	17	43	81	1464,014	12	28,12
1SR27S060204H	6	2035,752	63,617	127,235	31,4	59	49	16	15,7	3	18	26	17	43	108	1972,952	16	37,55

Dentatura Dritta SERIE 132H

Straight tooth system SERIES 132H

Q8G - C45

Qualità - Quality: 8 / Materiale - Material: C45

Angolo di pressione - Pressure angle: 20°

Superficie: lato inferiore e denti rettificati

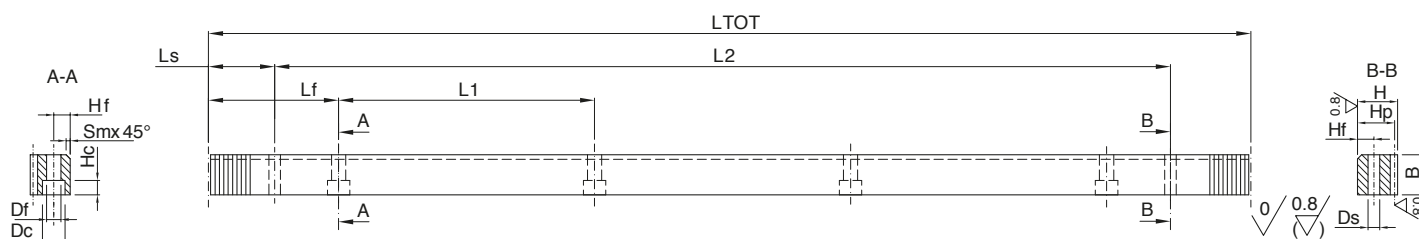
Surface: ground backside, ground teeth

Trattamento termico: denti temprati ad induzione 55-58 HRC

Heat-treatment: Induction-hardened teeth 55-58 HRC

R= 700 N/mm² (resistenza carico a rottura)

R= 700 N/mm² (tensile strength)



In caso di prodotti personalizzati a disegno, invia la tua richiesta a - In case you need customized products, please send your request to: info@gambinimeccanica.it

CODICE ITEM CODE	M	LTOT	Lf	L1	Ls	B	H	Hf	Ds	Sm	Df	Dc	Hc	Hp	Z	L2	N°fori holes	PESO kg
1SR18S020101HG	2	1005,310	62,832	125,664	31,3	25	24	8	5,7	2	7	11	7	22	160	942,710	8	4,2
1SR18S020201HG	2	2010,619	62,832	125,664	31,3	25	24	8	5,7	2	7	11	7	22	320	1948,019	16	8,4
1SR18S030102HG	3	1017,876	63,617	127,235	34,4	30	29	9	7,7	2	10	15	9	26	108	949,076	8	6
1SR18S030204HG	3	2035,752	63,617	127,235	34,4	30	29	9	7,7	2	10	15	9	26	216	1966,952	16	12
1SR18S040101HG	4	1005,310	62,832	125,664	37,5	40	39	12	11,7	2	14	20	13	35	80	930,310	8	10,5
1SR18S040201HG	4	2010,619	62,832	125,664	37,5	40	39	12	11,7	2	14	20	13	35	160	1935,619	16	20,4
1SR18S050101HG	5	1005,310	62,832	125,664	30,2	50	39	12	11,7	2,5	14	20	13	34	64	944,910	8	13,4
1SR18S050201HG	5	2010,619	62,832	125,664	30,2	50	39	12	11,7	2,5	14	20	13	34	128	1950,219	16	27,6
1SR18S060101HG	6	1017,876	63,617	127,235	31,4	60	49	16	15,7	3	18	26	17	43	54	955,076	8	19
1SR18S060204HG	6	2035,752	63,617	127,235	31,4	60	49	16	15,7	3	18	26	17	43	108	1972,952	16	38

Dentatura Dritta SERIE 134H

Straight tooth system SERIES 134H

Q8G - SAE1141

Qualità - Quality: 8 / Materiale - Material: SAE1141

Angolo di pressione - Pressure angle: 20°

Superficie: lato inferiore e denti rettificati

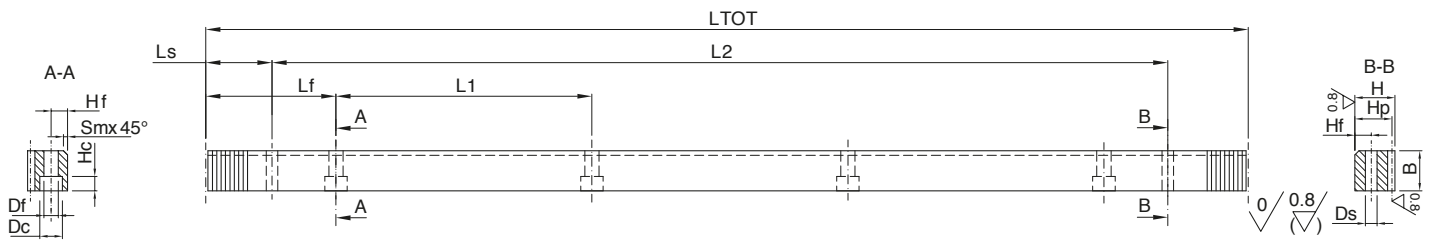
Surface: ground backside, ground teeth

Trattamento termico: denti temprati ad induzione 56-60 HRC

Heat-treatment: Induction-hardened teeth 56-60 HRC

R= 800 N/mm² (resistenza carico a rottura)

R= 800 N/mm² (tensile strength)



In caso di prodotti personalizzati a disegno, invia la tua richiesta a - In case you need customized products, please send your request to: info@gambinimeccanica.it

CODICE ITEM CODE	M	LTOT	Lf	L1	Ls	B	H	Hf	Ds	Sm	Df	Dc	Hc	Hp	Z	L2	N°fori holes	PESO kg
1SR28S020101HG	2	1005,310	62,832	125,664	31,3	25	24	8	5,7	2	7	11	7	22	160	942,710	8	4,2
1SR28S020201HG	2	2010,619	62,832	125,664	31,3	25	24	8	5,7	2	7	11	7	22	320	1948,019	16	8,4
1SR28S030102HG	3	1017,876	63,617	127,235	34,4	30	29	9	7,7	2	10	15	9	26	108	949,076	8	6
1SR28S030204HG	3	2035,752	63,617	127,235	34,4	30	29	9	7,7	2	10	15	9	26	216	1966,952	16	12
1SR28S040101HG	4	1005,310	62,832	125,664	37,5	40	39	12	11,7	2	14	20	13	35	80	930,310	8	10,5
1SR28S040201HG	4	2010,619	62,832	125,664	37,5	40	39	12	11,7	2	14	20	13	35	160	1935,619	16	20,4
1SR28S050101HG	5	1005,310	62,832	125,664	30,2	50	39	12	11,7	2,5	14	20	13	34	64	944,910	8	13,4
1SR28S050201HG	5	2010,619	62,832	125,664	30,2	50	39	12	11,7	2,5	14	20	13	34	128	1950,219	16	27,6
1SR28S060101HG	6	1017,876	63,617	127,235	31,4	60	49	16	15,7	3	18	26	17	43	54	955,076	8	19
1SR28S060204HG	6	2035,752	63,617	127,235	31,4	60	49	16	15,7	3	18	26	17	43	108	1972,952	16	38

Dentatura Dritta SERIE 135H

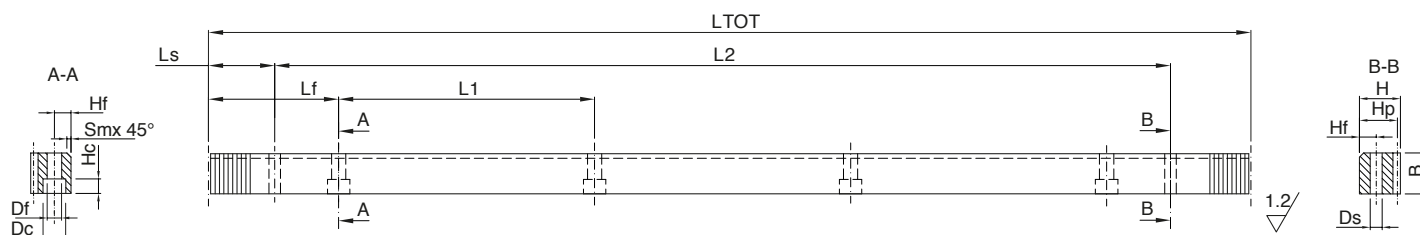
Straight tooth system SERIES 135H

Q8 - C45

Qualità - Quality: 8
Materiale - Material: C45
Angolo di pressione - Pressure angle: 20°
Superficie: fresata - Surface: milled
Trattamento termico: denti temprati ad induzione 55-58 HRC

Heat-treatment: Induction-hardened teeth 55-58 HRC

R= 700 N/mm² (resistenza carico a rottura)

 R= 700 N/mm² (tensile strength)

 In caso di prodotti personalizzati a disegno, invia la tua richiesta a - In case you need customized products, please send your request to: info@gambinimeccanica.it

CODICE ITEM CODE	M	LTOT	Lf	L1	Ls	B	H	Hf	Ds	Sm	Df	Dc	Hc	Hp	Z	L2	N°fori holes	PESO kg
1SR18S020050H	2	502,655	62,832	125,664	31,3	24	24	8	5,7	2	7	11	7	22	80	440,055	4	2,02
1SR18S020101H	2	1005,310	62,832	125,664	31,3	24	24	8	5,7	2	7	11	7	22	160	942,710	8	4,05
1SR18S020151H	2	1507,964	62,832	125,664	31,3	24	24	8	5,7	2	7	11	7	22	240	1445,364	12	6,08
1SR18S020201H	2	2010,619	62,832	125,664	31,3	24	24	8	5,7	2	7	11	7	22	320	1948,019	16	8,11
1SR18S030051H	3	508,938	63,617	127,235	34,4	29	29	9	7,7	2	10	15	9	26	54	440,138	4	2,87
1SR18S030102H	3	1017,876	63,617	127,235	34,4	29	29	9	7,7	2	10	15	9	26	108	949,076	8	5,76
1SR18S030153H	3	1526,814	63,617	127,235	34,4	29	29	9	7,7	2	10	15	9	26	162	1458,014	12	8,66
1SR18S030204H	3	2035,752	63,617	127,235	34,4	29	29	9	7,7	2	10	15	9	26	216	1966,952	16	11,55
1SR18S040050H	4	502,655	62,832	125,664	37,5	39	39	12	7,7	3	10	15	9	35	40	427,655	4	5,2
1SR18S040101H	4	1005,310	62,832	125,664	37,5	39	39	12	7,7	3	10	15	9	35	80	930,310	8	10,42
1SR18S040151H	4	1507,964	62,832	125,664	37,5	39	39	12	7,7	3	10	15	9	35	120	1432,964	12	15,65
1SR18S040201H	4	2010,619	62,832	125,664	37,5	39	39	12	7,7	3	10	15	9	35	160	1935,619	16	20,87
1SR18S050050H	5	502,655	62,832	125,664	30,1	49	39	12	11,7	3	14	20	13	34	32	442,455	4	6,13
1SR18S050101H	5	1005,310	62,832	125,664	30,1	49	39	12	11,7	3	14	20	13	34	64	945,110	8	12,34
1SR18S050151H	5	1507,964	62,832	125,664	30,1	49	39	12	11,7	3	14	20	13	34	96	1447,764	12	18,55
1SR18S050201H	5	2010,619	62,832	125,664	30,1	49	39	12	11,7	3	14	20	13	34	128	1950,419	16	24,76
1SR18S060051H	6	508,938	63,617	127,235	31,4	59	49	16	15,7	3	18	26	17	43	27	446,138	4	9,25
1SR18S060102H	6	1017,876	63,617	127,235	31,4	59	49	16	15,7	3	18	26	17	43	54	955,076	8	18,68
1SR18S060153H	6	1526,814	63,617	127,235	31,4	59	49	16	15,7	3	18	26	17	43	81	1464,014	12	28,12
1SR18S060204H	6	2035,752	63,617	127,235	31,4	59	49	16	15,7	3	18	26	17	43	108	1972,952	16	37,55

Dentatura Dritta SERIE 140H

Straight tooth system SERIES 140H

Q8 - SAE1141

Qualità - Quality: 8

Materiale - Material: SAE1141

Angolo di pressione - Pressure angle: 20°

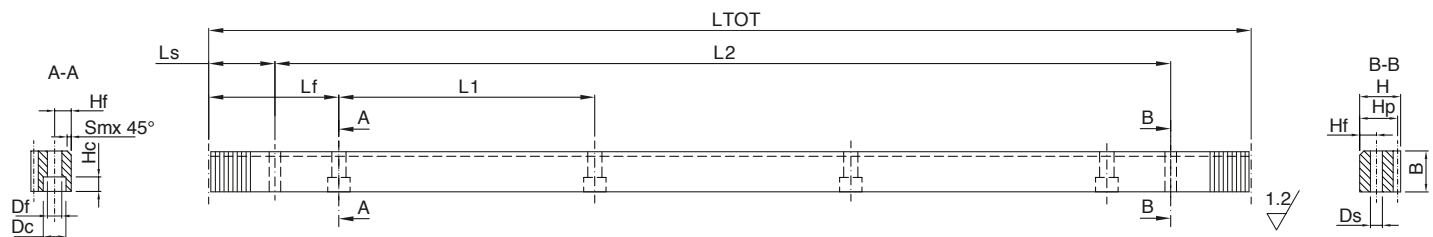
Superficie: fresata - Surface: milled

Trattamento termico: denti temprati ad induzione 56-60 HRC

Heat-treatment: Induction-hardened teeth 56-60 HRC

R= 800 N/mm² (resistenza carico a rottura)

R= 800 N/mm² (tensile strength)



In caso di prodotti personalizzati a disegno, invia la tua richiesta a - In case you need customized products, please send your request to: info@gambinimeccanica.it

CODICE ITEM CODE	M	LTOT	Lf	L1	Ls	B	H	Hf	Ds	Sm	Df	Dc	Hc	Hp	Z	L2	N°fori holes	PESO kg
1SR28S020050H	2	502,655	62,832	125,664	31,3	24	24	8	5,7	2	7	11	7	22	80	440,055	4	2,02
1SR28S020101H	2	1005,310	62,832	125,664	31,3	24	24	8	5,7	2	7	11	7	22	160	942,710	8	4,05
1SR28S020151H	2	1507,964	62,832	125,664	31,3	24	24	8	5,7	2	7	11	7	22	240	1445,364	12	6,08
1SR28S020201H	2	2010,619	62,832	125,664	31,3	24	24	8	5,7	2	7	11	7	22	320	1948,019	16	8,11
1SR28S030051H	3	508,938	63,617	127,235	34,4	29	29	9	7,7	2	10	15	9	26	54	440,138	4	2,87
1SR28S030102H	3	1017,876	63,617	127,235	34,4	29	29	9	7,7	2	10	15	9	26	108	949,076	8	5,76
1SR28S030153H	3	1526,814	63,617	127,235	34,4	29	29	9	7,7	2	10	15	9	26	162	1458,014	12	8,66
1SR28S030204H	3	2035,752	63,617	127,235	34,4	29	29	9	7,7	2	10	15	9	26	216	1966,952	16	11,55
1SR28S040050H	4	502,655	62,832	125,664	37,5	39	39	12	7,7	3	10	15	9	35	40	427,655	4	5,2
1SR28S040101H	4	1005,310	62,832	125,664	37,5	39	39	12	7,7	3	10	15	9	35	80	930,310	8	10,42
1SR28S040151H	4	1507,964	62,832	125,664	37,5	39	39	12	7,7	3	10	15	9	35	120	1432,964	12	15,65
1SR28S040201H	4	2010,619	62,832	125,664	37,5	39	39	12	7,7	3	10	15	9	35	160	1935,619	16	20,87
1SR28S050050H	5	502,655	62,832	125,664	30,1	49	39	12	11,7	3	14	20	13	34	32	442,455	4	6,13
1SR28S050101H	5	1005,310	62,832	125,664	30,1	49	39	12	11,7	3	14	20	13	34	64	945,110	8	12,34
1SR28S050151H	5	1507,964	62,832	125,664	30,1	49	39	12	11,7	3	14	20	13	34	96	1447,764	12	18,55
1SR28S050201H	5	2010,619	62,832	125,664	30,1	49	39	12	11,7	3	14	20	13	34	128	1950,419	16	24,76
1SR28S060051H	6	508,938	63,617	127,235	31,4	59	49	16	15,7	3	18	26	17	43	27	446,138	4	9,25
1SR28S060102H	6	1017,876	63,617	127,235	31,4	59	49	16	15,7	3	18	26	17	43	54	955,076	8	18,68
1SR28S060153H	6	1526,814	63,617	127,235	31,4	59	49	16	15,7	3	18	26	17	43	81	1464,014	12	28,12
1SR28S060204H	6	2035,752	63,617	127,235	31,4	59	49	16	15,7	3	18	26	17	43	108	1972,952	16	37,55

Dentatura Dritta SERIE 145H

Straight tooth system SERIES 145H

Q8 - 42CrMo4

Qualità - Quality: 8

Materiale - Material: 42CrMo4

Angolo di pressione - Pressure angle: 20°

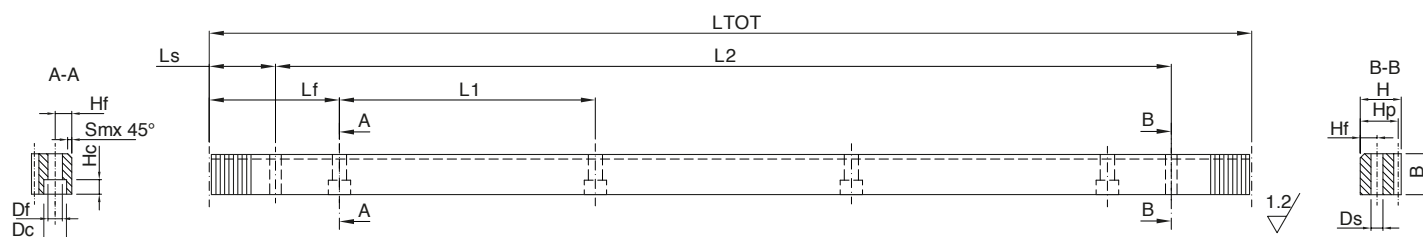
Superficie: fresata - Surface: milled

Trattamento termico: non incluso

Heat-treatment: not included

R= 900 N/mm² (resistenza carico a rottura)

R= 900 N/mm² (tensile strength)



In caso di prodotti personalizzati a disegno, invia la tua richiesta a - In case you need customized products, please send your request to: info@gambinimeccanica.it

CODICE ITEM CODE	M	LTOT	Lf	L1	Ls	B	H	Hf	Ds	Sm	Df	Dc	Hc	Hp	Z	L2	N°fori holes	PESO kg
1SR08S020050H	2	502,655	62,832	125,664	31,3	24	24	8	5,7	2	7	11	7	22	80	440,055	4	2,02
1SR08S020101H	2	1005,310	62,832	125,664	31,3	24	24	8	5,7	2	7	11	7	22	160	942,710	8	4,05
1SR08S030051H	3	508,938	63,617	127,235	34,4	29	29	9	7,7	2	10	15	9	26	54	440,138	4	2,87
1SR08S030102H	3	1017,876	63,617	127,235	34,4	29	29	9	7,7	2	10	15	9	26	108	949,076	8	5,76
1SR08S040050H	4	502,655	62,832	125,664	37,5	39	39	12	7,7	3	10	15	9	35	40	427,655	4	5,2
1SR08S040101H	4	1005,310	62,832	125,664	37,5	39	39	12	7,7	3	10	15	9	35	80	930,310	8	10,42
1SR08S050050H	5	502,655	62,832	125,664	30,1	49	39	12	11,7	3	14	20	13	34	32	442,455	4	6,13
1SR08S050101H	5	1005,310	62,832	125,664	30,1	49	39	12	11,7	3	14	20	13	34	64	945,110	8	12,34

Dentatura Dritta SERIE 150H

Straight tooth system SERIES 150H

Q9 - C45

Qualità - Quality: **9**

Materiale - Material: **C45**

Angolo di pressione - Pressure angle: **20°**

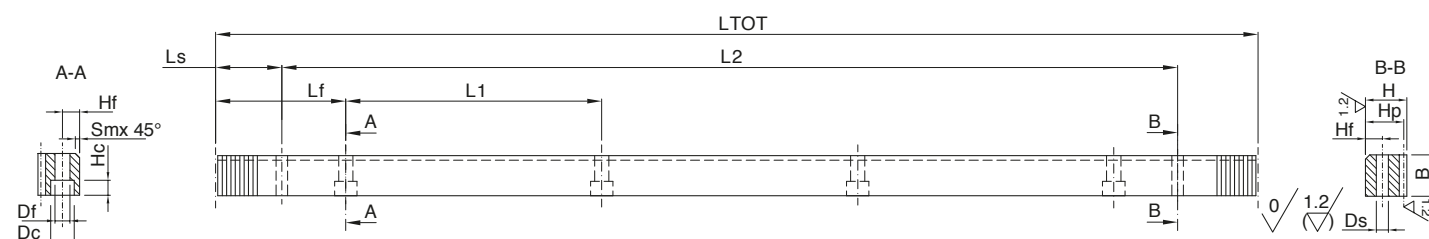
Superficie: trafilata - Surface: cold drawn

Trattamento termico: non incluso

Heat-treatment: not included

R= 700 N/mm² (resistenza carico a rottura)

R= 700 N/mm² (tensile strength)



* Per lamature prefori spine vedere pagina 19 - For pin pre-bore dimensions see page 19

In caso di prodotti personalizzati a disegno, invia la tua richiesta a - In case you need customized products, please send your request to: info@gambinimeccanica.it

CODICE ITEM CODE	M	LTOT	Lf	L1	Ls	B	H	Hf	Ds	Sm	Df	Dc	Hc	Hp	Z	L2	N°fori holes	PESO kg
1SR19S010050H	1	502,655	62,832	125,664	31,3	20	19	8	5,7	2	7	11	7	18	160	440,055	4	1,37
1SR19S010101H	1	1005,310	62,832	125,664	31,3	20	19	8	5,7	2	7	11	7	18	320	942,710	8	2,75
1SR19S010151H	1	1507,964	62,832	125,664	31,3	20	19	8	5,7	2	7	11	7	18	480	1445,364	12	4,12
1SR19S015051H	1,5	508,938	63,617	127,235	34,4	20	19	8	5,7	2	7	11	7	17,5	108	440,138	4	1,35
1SR19S015102H	1,5	1017,876	63,617	127,235	34,4	20	19	8	5,7	2	7	11	7	17,5	216	949,076	8	2,7
1SR19S015153H	1,5	1526,814	63,617	127,235	34,4	20	19	8	5,7	2	7	11	7	17,5	324	1458,014	12	4,06
1SR19S020050H	2	502,655	62,832	125,664	31,3	25	24	8	5,7	2	7	11	7	22	80	440,055	4	2,11
1SR19S020101H	2	1005,310	62,832	125,664	31,3	25	24	8	5,7	2	7	11	7	22	160	942,710	8	4,22
1SR19S020151H	2	1507,964	62,832	125,664	31,3	25	24	8	5,7	2	7	11	7	22	240	1445,364	12	6,34
1SR19S020201H	2	2010,619	62,832	125,664	31,3	25	24	8	5,7	2	7	11	7	22	320	1948,019	16	8,45
1SR19S030051H	3	508,938	63,617	127,235	34,4	30	29	9	7,7	2	10	15	9	26	54	440,138	4	2,97
1SR19S030102H	3	1017,876	63,617	127,235	34,4	30	29	9	7,7	2	10	15	9	26	108	949,076	8	5,96
1SR19S030153H	3	1526,814	63,617	127,235	34,4	30	29	9	7,7	2	10	15	9	26	162	1458,014	12	8,96
1SR19S030204H	3	2035,752	63,617	127,235	34,4	30	29	9	7,7	2	10	15	9	26	216	1966,952	16	11,95
1SR19S040050H	4	502,655	62,832	125,664	37,5	40	39	12	7,7	3	10	15	9	35	40	427,655	4	5,33
1SR19S040101H	4	1005,310	62,832	125,664	37,5	40	39	12	7,7	3	10	15	9	35	80	930,310	8	10,69
1SR19S040151H	4	1507,964	62,832	125,664	37,5	40	39	12	7,7	3	10	15	9	35	120	1432,964	12	16,05
1SR19S040201H	4	2010,619	62,832	125,664	37,5	40	39	12	7,7	3	10	15	9	35	160	1935,619	16	21,41
1SR19S050050H	5	502,655	62,832	125,664	30,1	50	39	12	11,7	3	14	20	13	34	32	442,455	4	6,25
1SR19S050101H	5	1005,310	62,832	125,664	30,1	50	39	12	11,7	3	14	20	13	34	64	945,110	8	12,59
1SR19S050151H	5	1507,964	62,832	125,664	30,1	50	39	12	11,7	3	14	20	13	34	96	1447,764	12	18,93
1SR19S050201H	5	2010,619	62,832	125,664	30,1	50	39	12	11,7	3	14	20	13	34	128	1950,419	16	25,27
1SR19S060051H	6	508,938	63,617	127,235	31,4	60	49	16	15,7	3	18	26	17	43	27	446,138	4	9,41
1SR19S060102H	6	1017,876	63,617	127,235	31,4	60	49	16	15,7	3	18	26	17	43	54	955,076	8	19,01
1SR19S060153H	6	1526,814	63,617	127,235	31,4	60	49	16	15,7	3	18	26	17	43	81	1464,014	12	28,6
1SR19S060204H	6	2035,752	63,617	127,235	31,4	60	49	16	15,7	3	18	26	17	43	108	1972,952	16	38,2
1SR19S080050H	8	502,655	62,832	125,664	26,6	80	79	25	19,7/21*	3	22	33	21	71	20	449,455	4	20,61
1SR19S080101H	8	1005,310	62,832	125,664	26,6	80	79	25	19,7/21*	3	22	33	21	71	40	952,110	8	41,6
1SR19S080151H	8	1507,964	62,832	125,664	26,6	80	79	25	19,7/21*	3	22	33	21	71	60	1454,764	12	62,6
1SR19S080201H	8	2010,619	62,832	125,664	26,6	80	79	25	19,7/21*	3	22	33	21	71	80	1957,419	16	83,59
1SR19S100101H	10	1005,310	62,832	125,664	125,66	100	99	32	19,7/21*	3	33	48	32	89	32	753,990	8	62
1SR19S120102H	12	1017,876	63,617	127,235	127,23	120	119	40	19,7/21*	3	39	58	38	107	27	763,416	8	88,88

Dentatura Dritta SERIE 155H

Straight tooth system SERIES 155H

Q9 - SAE1141

Qualità - Quality: 9

Materiale - Material: SAE1141

Angolo di pressione - Pressure angle: 20°

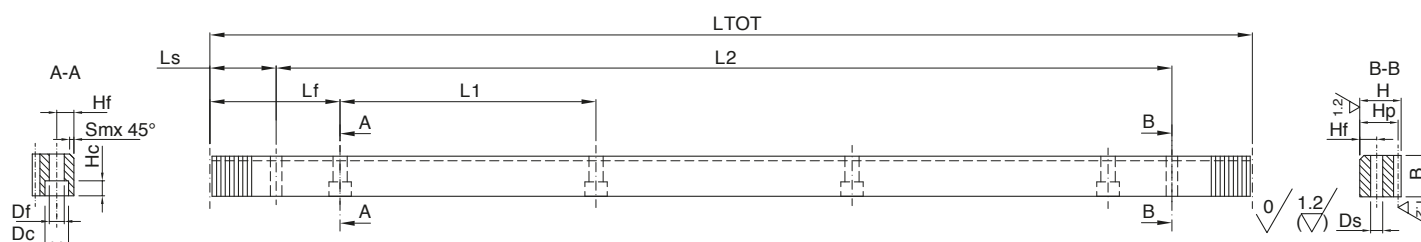
Superficie: trafilata - Surface: cold drawn

Trattamento termico: non incluso

Heat-treatment: not included

R= 800 N/mm² (resistenza carico a rottura)

R= 800 N/mm² (tensile strength)



In caso di prodotti personalizzati a disegno, invia la tua richiesta a - In case you need customized products, please send your request to: info@gambinimeccanica.it

CODICE ITEM CODE	M	LTOT	Lf	L1	Ls	B	H	Hf	Ds	Sm	Df	Dc	Hc	Hp	Z	L2	N°fori holes	PESO kg
1SR29S010050H	1	502,655	62,832	125,664	31,3	20	19	8	5,7	2	7	11	7	18	160	440,055	4	1,37
1SR29S010101H	1	1005,310	62,832	125,664	31,3	20	19	8	5,7	2	7	11	7	18	320	942,710	8	2,75
1SR29S010151H	1	1507,964	62,832	125,664	31,3	20	19	8	5,7	2	7	11	7	18	480	1445,364	12	4,12
1SR29S015051H	1,5	508,938	63,617	127,235	34,4	20	19	8	5,7	2	7	11	7	17,5	108	440,138	4	1,35
1SR29S015102H	1,5	1017,876	63,617	127,235	34,4	20	19	8	5,7	2	7	11	7	17,5	216	949,076	8	2,7
1SR29S015153H	1,5	1526,814	63,617	127,235	34,4	20	19	8	5,7	2	7	11	7	17,5	324	1458,014	12	4,06
1SR29S020050H	2	502,655	62,832	125,664	31,3	25	24	8	5,7	2	7	11	7	22	80	440,055	4	2,11
1SR29S020101H	2	1005,310	62,832	125,664	31,3	25	24	8	5,7	2	7	11	7	22	160	942,710	8	4,22
1SR29S020151H	2	1507,964	62,832	125,664	31,3	25	24	8	5,7	2	7	11	7	22	240	1445,364	12	6,34
1SR29S020201H	2	2010,619	62,832	125,664	31,3	25	24	8	5,7	2	7	11	7	22	320	1948,019	16	8,45
1SR29S030051H	3	508,938	63,617	127,235	34,4	30	29	9	7,7	2	10	15	9	26	54	440,138	4	2,97
1SR29S030102H	3	1017,876	63,617	127,235	34,4	30	29	9	7,7	2	10	15	9	26	108	949,076	8	5,96
1SR29S030153H	3	1526,814	63,617	127,235	34,4	30	29	9	7,7	2	10	15	9	26	162	1458,014	12	8,96
1SR29S030204H	3	2035,752	63,617	127,235	34,4	30	29	9	7,7	2	10	15	9	26	216	1966,952	16	11,95
1SR29S031050H	3,183	500,000	62,498	124,996	34,4	30	29	9	7,7	2	10	15	9	25,817	50	431,184	4	2,89
1SR29S031100H	3,183	1000,000	62,498	124,996	34,4	30	29	9	7,7	2	10	15	9	25,817	100	931,169	8	5,81
1SR29S031150H	3,183	500,000	62,498	124,996	34,4	30	29	9	7,7	2	10	15	9	25,817	150	1431,153	12	8,73
1SR29S031200H	3,183	1000,000	62,498	124,996	34,4	30	29	9	7,7	2	10	15	9	25,817	200	1931,138	16	11,64
1SR29S040050H	4	502,655	62,832	125,664	37,5	40	39	12	7,7	3	10	15	9	35	40	427,655	4	5,33
1SR29S040101H	4	1005,310	62,832	125,664	37,5	40	39	12	7,7	3	10	15	9	35	80	930,310	8	10,69
1SR29S040151H	4	1507,964	62,832	125,664	37,5	40	39	12	7,7	3	10	15	9	35	120	1432,964	12	16,05
1SR29S040201H	4	2010,619	62,832	125,664	37,5	40	39	12	7,7	3	10	15	9	35	160	1935,619	16	21,41
1SR29S050050H	5	502,655	62,832	125,664	30,1	50	39	12	11,7	3	14	20	13	34	32	442,455	4	6,25
1SR29S050101H	5	1005,310	62,832	125,664	30,1	50	39	12	11,7	3	14	20	13	34	64	945,110	8	12,59
1SR29S050151H	5	1507,964	62,832	125,664	30,1	50	39	12	11,7	3	14	20	13	34	96	1447,764	12	18,93
1SR29S050201H	5	2010,619	62,832	125,664	30,1	50	39	12	11,7	3	14	20	13	34	128	1950,419	16	25,27
1SR29S060051H	6	508,938	63,617	127,235	31,4	60	49	16	15,7	3	18	26	17	43	27	446,138	4	9,41
1SR29S060102H	6	1017,876	63,617	127,235	31,4	60	49	16	15,7	3	18	26	17	43	54	955,076	8	19,01
1SR29S060153H	6	1526,814	63,617	127,235	31,4	60	49	16	15,7	3	18	26	17	43	81	1464,014	12	28,6
1SR29S060204H	6	2035,752	63,617	127,235	31,4	60	49	16	15,7	3	18	26	17	43	108	1972,952	16	38,2

Dentatura Dritta SERIE 160H

Straight tooth system SERIES 160H

Q10 - C45

Qualità - Quality: **10**

Materiale - Material: **C45**

Angolo di pressione - Pressure angle: **20°**

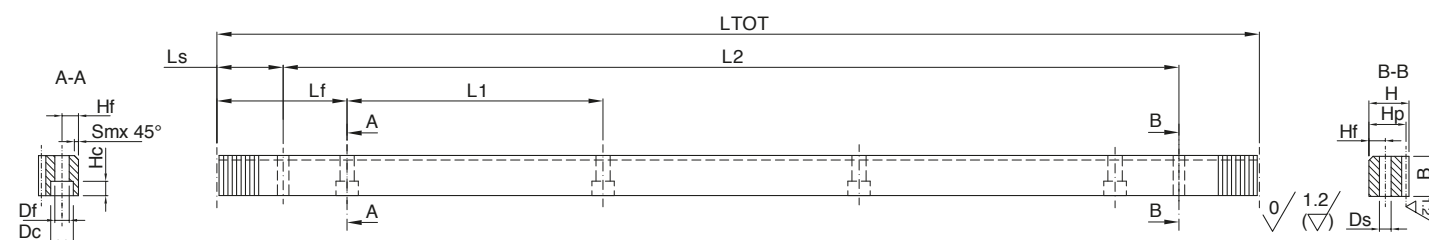
Superficie: trafilata - Surface: cold drawn

Trattamento termico: denti temprati ad induzione 55-58 HRC

Heat-treatment: Induction-hardened teeth 55-58 HRC

R= 700 N/mm² (resistenza carico a rottura)

R= 700 N/mm² (tensile strength)



* Per lamature prefiori spine vedere pagina 19 - For pin pre-bore dimensions see page 19

In caso di prodotti personalizzati a disegno, invia la tua richiesta a - In case you need customized products, please send your request to: info@gambinimeccanica.it

CODICE ITEM CODE	M	LTOT	Lf	L1	Ls	B	H	Hf	Ds	Sm	Df	Dc	Hc	Hp	Z	L2	N°fori holes	PESO kg
1SR11S010050H	1	502,655	62,832	125,664	31,3	20	20	8	5,7	2	7	11	7	19	160	440,055	4	1,45
1SR11S010101H	1	1005,310	62,832	125,664	31,3	20	20	8	5,7	2	7	11	7	19	320	942,710	8	2,91
1SR11S010151H	1	1507,964	62,832	125,664	31,3	20	20	8	5,7	2	7	11	7	19	480	1445,364	12	4,37
1SR11S015051H	1,5	508,938	63,617	127,235	34,4	20	20	8	5,7	2	7	11	7	18,5	108	440,138	4	1,43
1SR11S015102H	1,5	1017,876	63,617	127,235	34,4	20	20	8	5,7	2	7	11	7	18,5	216	949,076	8	2,86
1SR11S015153H	1,5	1526,814	63,617	127,235	34,4	20	20	8	5,7	2	7	11	7	18,5	324	1458,014	12	4,29
1SR11S020050H	2	502,655	62,832	125,664	31,3	25	25	8	5,7	2	7	11	7	23	80	440,055	4	2,2
1SR11S020101H	2	1005,310	62,832	125,664	31,3	25	25	8	5,7	2	7	11	7	23	160	942,710	8	4,42
1SR11S020151H	2	1507,964	62,832	125,664	31,3	25	25	8	5,7	2	7	11	7	23	240	1445,364	12	6,63
1SR11S020201H	2	2010,619	62,832	125,664	31,3	25	25	8	5,7	2	7	11	7	23	320	1948,019	16	8,85
1SR11S030051H	3	508,938	63,617	127,235	34,4	30	30	9	7,7	2	10	15	9	27	54	440,138	4	3,09
1SR11S030102H	3	1017,876	63,617	127,235	34,4	30	30	9	7,7	2	10	15	9	27	108	949,076	8	6,2
1SR11S030153H	3	1526,814	63,617	127,235	34,4	30	30	9	7,7	2	10	15	9	27	162	1458,014	12	9,32
1SR11S030204H	3	2035,752	63,617	127,235	34,4	30	30	9	7,7	2	10	15	9	27	216	1966,952	16	12,43
1SR11S040050H	4	502,655	62,832	125,664	37,5	40	40	12	7,7	3	10	15	9	36	40	427,655	4	5,49
1SR11S040101H	4	1005,310	62,832	125,664	37,5	40	40	12	7,7	3	10	15	9	36	80	930,310	8	11,01
1SR11S040151H	4	1507,964	62,832	125,664	37,5	40	40	12	7,7	3	10	15	9	36	120	1432,964	12	16,52
1SR11S040201H	4	2010,619	62,832	125,664	37,5	40	40	12	7,7	3	10	15	9	36	160	1935,619	16	22,04
1SR11S050050H	5	502,655	62,832	125,664	30,1	50	40	12	11,7	3	14	20	13	35	32	442,455	4	6,45
1SR11S050101H	5	1005,310	62,832	125,664	30,1	50	40	12	11,7	3	14	20	13	35	64	945,110	8	12,99
1SR11S050151H	5	1507,964	62,832	125,664	30,1	50	40	12	11,7	3	14	20	13	35	96	1447,764	12	19,52
1SR11S050201H	5	2010,619	62,832	125,664	30,1	50	40	12	11,7	3	14	20	13	35	128	1950,419	16	26,06
1SR11S060051H	6	508,938	63,617	127,235	31,4	60	50	16	15,7	3	18	26	17	44	27	446,138	4	9,65
1SR11S060102H	6	1017,876	63,617	127,235	31,4	60	50	16	15,7	3	18	26	17	44	54	955,076	8	19,49
1SR11S060153H	6	1526,814	63,617	127,235	31,4	60	50	16	15,7	3	18	26	17	44	81	1464,014	12	29,32
1SR11S060204H	6	2035,752	63,617	127,235	31,4	60	50	16	15,7	3	18	26	17	44	108	1972,952	16	39,15
1SR11S080050H	8	502,655	62,832	125,664	26,6	80	80	25	19,7/21*	3	22	33	21	72	20	449,455	4	20,93
1SR11S080101H	8	1005,310	62,832	125,664	26,6	80	80	25	19,7/21*	3	22	33	21	72	40	952,110	8	42,23
1SR11S080151H	8	1507,964	62,832	125,664	26,6	80	80	25	19,7/21*	3	22	33	21	72	60	1454,764	12	63,54
1SR11S100101H	10	1005,310	62,832	125,664	125,66	100	100	32	19,7/21*	3	33	48	32	90	32	753,990	8	62,79
1SR11S120102H	12	1017,876	63,617	127,235	127,23	120	120	40	19,7/21*	3	39	58	38	108	27	763,416	8	89,84

Dentatura Dritta SERIE 165H

Straight tooth system SERIES 165H

Q10 - SAE1141

Qualità - Quality: 10

Materiale - Material: SAE1141

Angolo di pressione - Pressure angle: 20°

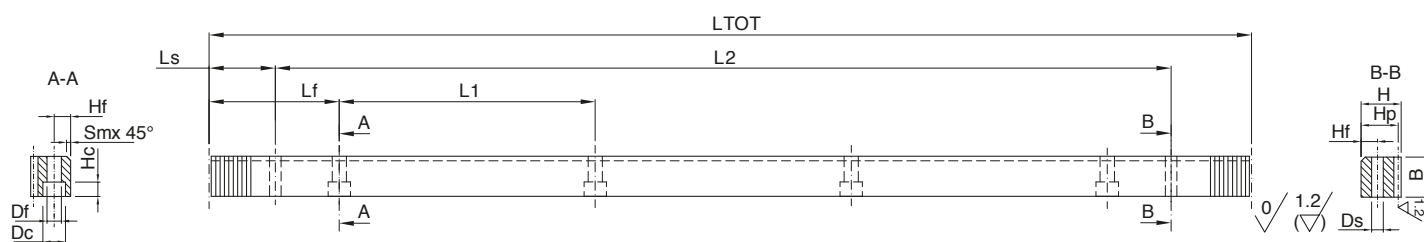
Superficie: trafilata - Surface: cold drawn

Trattamento termico: denti temprati ad induzione 56-60 HRC

Heat-treatment: Induction-hardened teeth 56-60 HRC

R= 800 N/mm² (resistenza carico a rottura)

R= 800 N/mm² (tensile strength)



In caso di prodotti personalizzati a disegno, invia la tua richiesta a - In case you need customized products, please send your request to: info@gambinimeccanica.it

CODICE ITEM CODE	M	LTOT	Lf	L1	Ls	B	H	Hf	Ds	Sm	Df	Dc	Hc	Hp	Z	L2	N°fori holes	PESO kg
1SR21S010050H	1	502,655	62,832	125,664	31,3	20	20	8	5,7	2	7	11	7	19	160	440,055	4	1,45
1SR21S010101H	1	1005,310	62,832	125,664	31,3	20	20	8	5,7	2	7	11	7	19	320	942,710	8	2,91
1SR21S010151H	1	1507,964	62,832	125,664	31,3	20	20	8	5,7	2	7	11	7	19	480	1445,364	12	4,37
1SR21S020050H	2	502,655	62,832	125,664	31,3	25	25	8	5,7	2	7	11	7	23	80	440,055	4	2,2
1SR21S020101H	2	1005,310	62,832	125,664	31,3	25	25	8	5,7	2	7	11	7	23	160	942,710	8	4,42
1SR21S020151H	2	1507,964	62,832	125,664	31,3	25	25	8	5,7	2	7	11	7	23	240	1445,364	12	6,63
1SR21S020201H	2	2010,619	62,832	125,664	31,3	25	25	8	5,7	2	7	11	7	23	320	1948,019	16	8,85
1SR21S030051H	3	508,938	63,617	127,235	34,4	30	30	9	7,7	2	10	15	9	27	54	440,138	4	3,09
1SR21S030102H	3	1017,876	63,617	127,235	34,4	30	30	9	7,7	2	10	15	9	27	108	949,076	8	6,2
1SR21S030153H	3	1526,814	63,617	127,235	34,4	30	30	9	7,7	2	10	15	9	27	162	1458,014	12	9,32
1SR21S030204H	3	2035,752	63,617	127,235	34,4	30	30	9	7,7	2	10	15	9	27	216	1966,952	16	12,43
1SR21S040050H	4	502,655	62,832	125,664	37,5	40	40	12	7,7	3	10	15	9	36	40	427,655	4	5,49
1SR21S040101H	4	1005,310	62,832	125,664	37,5	40	40	12	7,7	3	10	15	9	36	80	930,310	8	11,01
1SR21S040151H	4	1507,964	62,832	125,664	37,5	40	40	12	7,7	3	10	15	9	36	120	1432,964	12	16,52
1SR21S040201H	4	2010,619	62,832	125,664	37,5	40	40	12	7,7	3	10	15	9	36	160	1935,619	16	22,04
1SR21S050050H	5	502,655	62,832	125,664	30,1	50	40	12	11,7	3	14	20	13	35	32	442,455	4	6,45
1SR21S050101H	5	1005,310	62,832	125,664	30,1	50	40	12	11,7	3	14	20	13	35	64	945,110	8	12,99
1SR21S050151H	5	1507,964	62,832	125,664	30,1	50	40	12	11,7	3	14	20	13	35	96	1447,764	12	19,52
1SR21S050201H	5	2010,619	62,832	125,664	30,1	50	40	12	11,7	3	14	20	13	35	128	1950,419	16	26,06
1SR21S060051H	6	508,938	63,617	127,235	31,4	60	50	16	15,7	3	18	26	17	44	27	446,138	4	9,65
1SR21S060102H	6	1017,876	63,617	127,235	31,4	60	50	16	15,7	3	18	26	17	44	54	955,076	8	19,49
1SR21S060153H	6	1526,814	63,617	127,235	31,4	60	50	16	15,7	3	18	26	17	44	81	1464,014	12	29,32
1SR21S060204H	6	2035,752	63,617	127,235	31,4	60	50	16	15,7	3	18	26	17	44	108	1972,952	16	39,15

Dentatura Dritta SERIE 170H

Straight tooth system SERIES 170H

INOX AISI 304

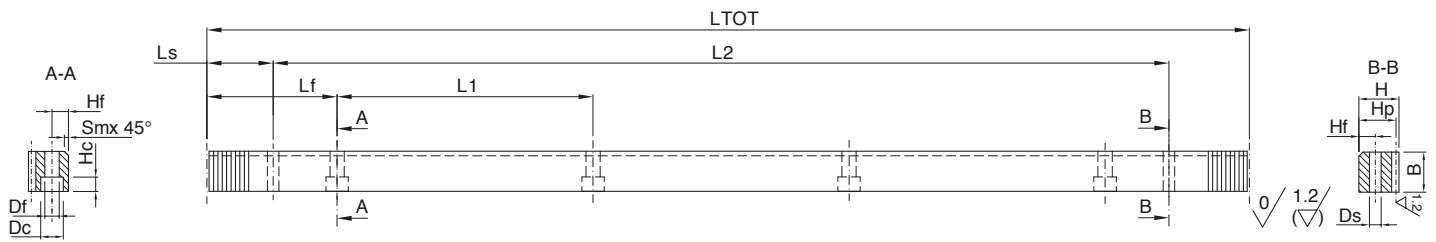
Materiale - Material: **INOX AISI 304**

Trattamento termico: non incluso

Angolo di pressione - Pressure angle: **20°**

Heat-treatment: not included

Superficie: trafilata - Surface: cold drawn



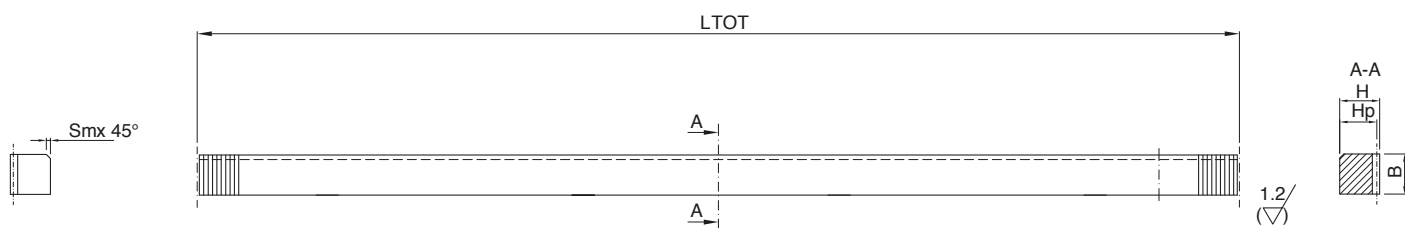
In caso di prodotti personalizzati a disegno, invia la tua richiesta a - In case you need customized products, please send your request to: info@gambinimeccanica.it

CODICE ITEM CODE	M	LTOT	Lf	L1	Ls	B	H	Hf	Ds	Sm	Df	Dc	Hc	Hp	Z	L2	N°fori holes	PESO kg
1SR61S010098H	1	980,177	61,261	122,522	30,6	20	19	8	5,7	2	7	11	7	18	312	918,977	8	2,75
1SR61S020098H	2	980,177	61,261	122,522	30,6	25	24	8	5,7	2	7	11	7	22	156	918,977	8	4,22
1SR61S030098H	3	980,177	61,261	122,522	30,6	30	29	9	7,7	2	10	15	9	26	104	918,977	8	5
1SR61S040098H	4	980,177	61,261	122,522	30,6	40	39	12	7,7	3	10	15	9	35	78	918,977	8	9,5
1SR61S050097H	5	973,894	60,868	121,737	30,4	50	39	12	11,7	3	14	20	13	34	62	913,094	8	11
1SR61S060098H	6	980,177	61,261	122,522	30,6	60	49	16	15,7	3	18	26	17	43	52	918,977	8	18

Dentatura Dritta SERIE 175

Straight tooth system SERIES 175

POM
Materiale - Material: POM

Angolo di pressione - Pressure angle: 20°

 In caso di prodotti personalizzati a disegno, invia la tua richiesta a - In case you need customized products, please send your request to: info@gambinimeccanica.it

CODICE ITEM CODE	M	L _{TOT}	B	H	H _p	Z
1SR71S010050	1	502,655	15	15	14	160
1SR71S010101	1	1005,310	15	15	14	320
1SR71S015050	1,5	499,513	17	17	15,5	106
1SR71S015100	1,5	999,026	17	17	15,5	212
1SR71S017050	1,75	500,299	20	20	18,25	91
1SR71S017100	1,75	1000,597	20	20	18,25	182
1SR71S020050	2	502,655	20	20	18	80
1SR71S020101	2	1005,310	20	20	18	160
1SR71S025050	2,5	502,655	25	25	22,5	64
1SR71S025100	2,5	997,456	25	25	22,5	127
1SR71S030051	3	508,938	30	30	27	54
1SR71S030102	3	1017,876	30	30	27	108
1SR71S031050	3,183	500,000	30	30	26,817	50
1SR71S031100	3,183	1000,000	30	30	26,817	100
1SR71S040050	4	502,655	40	40	36	40
1SR71S040101	4	1005,310	40	40	36	80